



[Go to Product page](#)

Datasheet for ABIN1305510

ABHD12B Protein (AA 1-255) (GST tag)

1 Image

Overview

Quantity:	10 µg
Target:	ABHD12B
Protein Characteristics:	AA 1-255
Origin:	Human
Source:	Wheat germ
Protein Type:	Recombinant
Purification tag / Conjugate:	This ABHD12B protein is labelled with GST tag.
Application:	ELISA, Western Blotting (WB), Affinity Purification (AP), Antibody Array (AA)

Product Details

Purpose:	ABHD12B (Human) Recombinant Protein (P01)
Sequence:	MLGIWHTVPS CRGEDAKGKD CCWYEAALRD GNPIIVYLHG SAEHRAASHR LKLVKVLSDG GFHVLSVDYR GFGDSTGKPT EEGLTTDAIC VYEWTKARSG ITPVCLWGHS LGTGVATNAA KVLEEKGCPV DAIVLEAPFT NMWVASINYP LLKIYRNIPG FLRTLMDALR KDKIIFPNDE NVKFLSSPLL ILHGEDDRTV PLEYGKKLYE IARNAYRNKE RVKMFVIFPPG FQHNLCKSP TLLITVRDFL SKQWS
Characteristics:	Human ABHD12B full-length ORF (NP_853511.2, 1 a.a. - 255 a.a.) recombinant protein with GST-tag at N-terminal.
Purification:	in vitro wheat germ expression system

Target Details

Target:	ABHD12B
Alternative Name:	ABHD12B (ABHD12B Products)
Background:	Full Gene Name: abhydrolase domain containing 12B Synonyms: BEM46L3,C14orf29,MGC129926,MGC129927,c14_5314
Gene ID:	145447
NCBI Accession:	NM_181533

Application Details

Application Notes:	Optimal working dilution should be determined by the investigator.
Comment:	Preparation method: in vitro, wheat germ expression system Product Quality tested by: 12.5% SDS-PAGE Stained with Coomassie Blue.
Restrictions:	For Research Use only

Handling

Buffer:	50 mM Tris-HCl, 10 mM reduced Glutathione, pH =8.0 in the elution buffer.
Handling Advice:	Aliquot to avoid repeated freezing and thawing.
Storage:	-80 °C
Storage Comment:	Best use within three months from the date of receipt of this protein.

Images

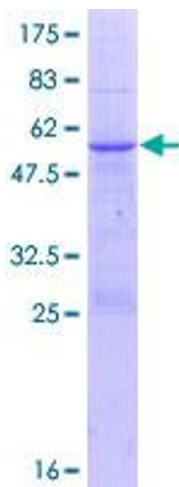


Image 1.