



[Go to Product page](#)

Datasheet for ABIN1305512

ABHD13 Protein (AA 1-337) (GST tag)

1 Image

Overview

Quantity:	25 µg
Target:	ABHD13
Protein Characteristics:	AA 1-337
Origin:	Human
Source:	Wheat germ
Protein Type:	Recombinant
Purification tag / Conjugate:	This ABHD13 protein is labelled with GST tag.
Application:	ELISA, Western Blotting (WB), Affinity Purification (AP), Antibody Array (AA)

Product Details

Purpose:	ABHD13 (Human) Recombinant Protein (P01)
Sequence:	MEKSWMLWNF VERWLIAS WSWALCRISL LPLIVTFHLY GGIILLLLIF ISIAGILYKF QDVLLYFPEQ PSSSRLYVPM PTGIPHENIF IRTKDGIRLN LILIRYTGDN SPYSPTIYF HGNAGNIGHR LPNALLMLVN LKVNLLLVVDY RGYGKSEGEA SEEGLYLDSE AVLDYVMTRP DLDKTKIFLF GRSLGGAVAI HLASENSHRI SAIMVENTFL SIPHMASTLF SFFPMRYLPL WCYKNKFLSY RKISQCRMPS LFISGLSDQL IPPVMMKQLY ELSPSRTKRL AIFPDGTHND TWQCQGYFTA LEQFIKEVK SHSPEEMAKT SSNVTII
Characteristics:	Human ABHD13 full-length ORF (NP_116248.2, 1 a.a. - 337 a.a.) recombinant protein with GST-tag at N-terminal.
Purification:	in vitro wheat germ expression system

Target Details

Target:	ABHD13
Alternative Name:	ABHD13 (ABHD13 Products)
Background:	Full Gene Name: abhydrolase domain containing 13 Synonyms: BEM46L1,C13orf6,FLJ14906,MGC27058,RP11-153I24.2,bA153I24.2
Gene ID:	84945
NCBI Accession:	NM_032859

Application Details

Application Notes:	Optimal working dilution should be determined by the investigator.
Comment:	Preparation method: in vitro, wheat germ expression system Product Quality tested by: 12.5% SDS-PAGE Stained with Coomassie Blue.
Restrictions:	For Research Use only

Handling

Buffer:	50 mM Tris-HCl, 10 mM reduced Glutathione, pH =8.0 in the elution buffer.
Handling Advice:	Aliquot to avoid repeated freezing and thawing.
Storage:	-80 °C
Storage Comment:	Best use within three months from the date of receipt of this protein.

Images

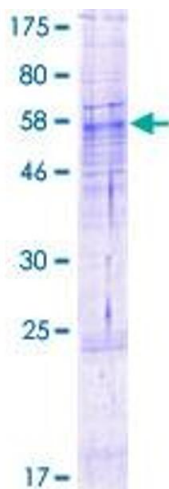


Image 1.