

Datasheet for ABIN1305526  
**EPHX4 Protein (AA 1-362) (GST tag)**



[Go to Product page](#)

1 Image

## Overview

Quantity:	25 µg
Target:	EPHX4
Protein Characteristics:	AA 1-362
Origin:	Human
Source:	Wheat germ
Protein Type:	Recombinant
Purification tag / Conjugate:	This EPHX4 protein is labelled with GST tag.
Application:	Western Blotting (WB), ELISA, Affinity Purification (AP), Antibody Array (AA)

## Product Details

Purpose:	ABHD7 (Human) Recombinant Protein (P01)
Sequence:	MARLRDCLPR LMLTLRSLLF WSLVYCYCGL CASIHLLKLL WSLGKGPAQT FRRPAREHPP ACLSDPSLGT HCYVRIKDSG LRFHYVAAGE RGKPLMLLLH GFPEFWYSWR YQLREFKSEY RVVALDLRGY GETDAPIHRQ NYKLDCLITD IKDILDSLGY SKCVLIGHDW GGMIAWLIAI CYPEMVMKLI VINFPHPNVF TEYILRHPAQ LLKSSYYYYFF QIPWFPEFMF SINDFKVLKH LFTSHSTGIG RKGQCQLTTED LEAYIYVFSQ PGALSGPINH YRNIFSCLPL KHHMVTPTL LLWGENDAFM EVEMAEVTKI FVKNYFRLTI LSEASHWLQQ DQPDIVNKLI WTLFLKEETRK KD
Characteristics:	Human ABHD7 full-length ORF ( NP_775838.2, 1 a.a. - 362 a.a.) recombinant protein with GST-tag at N-terminal.
Purification:	in vitro wheat germ expression system

## Target Details

Target:	EPHX4
Alternative Name:	ABHD7 ( <a href="#">EPHX4 Products</a> )
Background:	Full Gene Name: abhydrolase domain containing 7 Synonyms: EPHXRP,FLJ90341
Gene ID:	253152
NCBI Accession:	<a href="#">NM_173567</a>

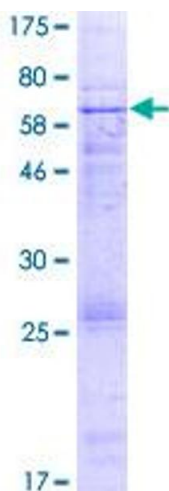
## Application Details

Application Notes:	Optimal working dilution should be determined by the investigator.
Comment:	Preparation method: in vitro, wheat germ expression system Product Quality tested by: 12.5% SDS-PAGE Stained with Coomassie Blue.
Restrictions:	For Research Use only

## Handling

Buffer:	50 mM Tris-HCl, 10 mM reduced Glutathione, pH =8.0 in the elution buffer.
Handling Advice:	Aliquot to avoid repeated freezing and thawing.
Storage:	-80 °C
Storage Comment:	Best use within three months from the date of receipt of this protein.

## Images



**Image 1.**