



[Go to Product page](#)

Datasheet for ABIN1305530

ABI2 Protein (AA 1-475) (GST tag)

1 Image

Overview

Quantity:	25 µg
Target:	ABI2
Protein Characteristics:	AA 1-475
Origin:	Human
Source:	Wheat germ
Protein Type:	Recombinant
Purification tag / Conjugate:	This ABI2 protein is labelled with GST tag.
Application:	ELISA, Western Blotting (WB), Affinity Purification (AP), Antibody Array (AA)

Product Details

Purpose:	ABI2 (Human) Recombinant Protein (P01)
Sequence:	MAELQMLLEE EIPGGRRALF DSYTNLERVA DYCENNYIQS ADKQRALEET KAYTTQSLAS VAYLINTLAN NVLQMLDIQA SQLRRMESSI NHISQTVDIH KEKVARREIG ILTTNKNTSR THKIIAPANL ERPVRYIRKP IDYILDDIG HGVKVSTQNM KMGGLPRTP PTQKPPSPPM SGKGTLGRHS PYRTLEPVRP PVPNDYVPS PTRNMAPSQQ SPVRTASVNQ RNRTYSSSGS SGGSHPPSSRS SSRENSGSGS VGVPIAVPTP SPPSVFPGHP VQFYSMNRPA SRHTPPTIGG SLPYRRPPSI TSQTSLQNM NGGPFYSQNP VSLAPPPPSI LQVTPQLPLM GFVARVQENI SDTPPPPPPV EEPVFDESPP PPPPPEDYEE EEAAVVEYSD PYAEDPPWA PRSYLEKVVA IYDYTKDKED ELSFQEGAI YVIKKNDG WYEGVMNGVTG LFPNGYVESI MHYSE
Characteristics:	Human ABI2 full-length ORF (NP_005750.4, 1 a.a. - 475 a.a.) recombinant protein with GST-tag at N-terminal.

Product Details

Purification: in vitro wheat germ expression system

Target Details

Target: ABI2

Alternative Name: ABI2 ([ABI2 Products](#))

Background: Full Gene Name: abl interactor 2
Synonyms: ABI-2,ABI2B,AIP-1,AbIBP3,SSH3BP2,argBPIA,argBPIB

Gene ID: 10152

NCBI Accession: [NM_005759](#)

Application Details

Application Notes: Optimal working dilution should be determined by the investigator.

Comment: Preparation method: in vitro, wheat germ expression system
Product Quality tested by: 12.5% SDS-PAGE Stained with Coomassie Blue.

Restrictions: For Research Use only

Handling

Buffer: 50 mM Tris-HCl, 10 mM reduced Glutathione, pH =8.0 in the elution buffer.

Handling Advice: Aliquot to avoid repeated freezing and thawing.

Storage: -80 °C

Storage Comment: Best use within three months from the date of receipt of this protein.

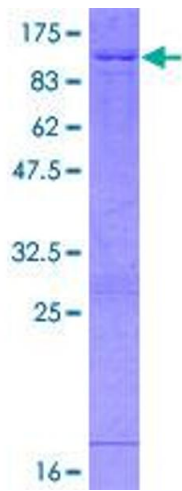


Image 1.