



Datasheet for ABIN1305540

## ABLIM1 Protein (AA 637-736) (GST tag)



[Go to Product page](#)

### 1 Image

#### Overview

Quantity:	10 µg
Target:	ABLIM1
Protein Characteristics:	AA 637-736
Origin:	Human
Source:	Wheat germ
Protein Type:	Recombinant
Purification tag / Conjugate:	This ABLIM1 protein is labelled with GST tag.
Application:	ELISA, Western Blotting (WB), Affinity Purification (AP), Antibody Array (AA)

#### Product Details

Purpose:	ABLIM1 (Human) Recombinant Protein (Q01)
Sequence:	RYDSPINSAS HIPSSKTASL PGYGRNGLHR PVSTDFAQYN SYGDVSGGVR DYQTLPDGHM PAMRMDRGVS MPNMLEPKIF PYEMLMVTNR GRNKILREVD
Characteristics:	Human ABLIM1 partial ORF ( NP_002304, 637 a.a. - 736 a.a.) recombinant protein with GST-tag at N-terminal.
Purification:	in vitro wheat germ expression system

#### Target Details

Target:	ABLIM1
Alternative Name:	ABLIM1 ( <a href="#">ABLIM1 Products</a> )

## Target Details

Background:	Full Gene Name: actin binding LIM protein 1 Synonyms: ABLIM,DKFZp781D0148,FLJ14564,KIAA0059,LIMAB1,LIMATIN,MGC1224
Gene ID:	3983
NCBI Accession:	<a href="#">NM_002313</a>

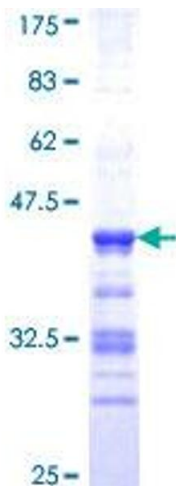
## Application Details

Application Notes:	Optimal working dilution should be determined by the investigator.
Comment:	Preparation method: in vitro, wheat germ expression system Product Quality tested by: 12.5% SDS-PAGE Stained with Coomassie Blue.
Restrictions:	For Research Use only

## Handling

Buffer:	50 mM Tris-HCl, 10 mM reduced Glutathione, pH =8.0 in the elution buffer.
Handling Advice:	Aliquot to avoid repeated freezing and thawing.
Storage:	-80 °C
Storage Comment:	Best use within three months from the date of receipt of this protein.

## Images



**Image 1.**