

Datasheet for ABIN1305631

PHACS Protein (AA 1-501) (GST tag)[Go to Product page](#)**1** Image

Overview

Quantity:	10 µg
Target:	PHACS (ACCS)
Protein Characteristics:	AA 1-501
Origin:	Human
Source:	Wheat germ
Protein Type:	Recombinant
Purification tag / Conjugate:	This PHACS protein is labelled with GST tag.
Application:	ELISA, Western Blotting (WB), Affinity Purification (AP), Antibody Array (AA)

Product Details

Purpose:	PHACS (Human) Recombinant Protein (P01)
Sequence:	MFTLPQKDFR APTTCLGPTC MQDLGSSHGE DLEGECSRKL DQKLPELRGV GDPAMISSDT SYLSSRGRMI KFWWDSAEEG YRTYHMDEYD EDKNPSGIIN LGTSENKLCF DLLSWRLSQR DMQRVEPSLL QYADWRGHLF LREEVAKFLS FYCKSPVPLR PENVVVLNNG ASLFSALATV LCEAGEAFLLI PTPYYGAIQ HVCLYGNIRL AYVYLDSEVT GLDTRPFQLT VEKLEMALRE AHSEGVKVKG LILISPQNPL GDVYSPEELQ EYLVFAKRHR LHVIVDEVYM LSVFEKSVGY RSVLSLERLP DPQRTHVMWA TSKDFGMSGSL RFGTLYTENQ DVATAVASLC RYHGLSGLVQ YQMAQLLRDR DWINQVYLPE NHARLKAHT YVSEELRALG IPFLSRGAGF FIWVDLRKYL LKGTFEEEML LWRRFLDNKV LLSFGKAFEC KEPGWFRFVF SDQVHRLCLG MQRVQVLAG KSQVAEDPRP SQSQEPSDQR R
Characteristics:	Human PHACS full-length ORF (AAH20197.1, 1 a.a. - 501 a.a.) recombinant protein with GST-tag at N-terminal.

Product Details

Purification: in vitro wheat germ expression system

Target Details

Target: PHACS (ACCS)

Alternative Name: ACCS ([ACCS Products](#))

Background: Full Gene Name: 1-aminocyclopropane-1-carboxylate synthase homolog (Arabidopsis)(non-functional)
Synonyms: ACS,PHACS

Gene ID: 84680

Application Details

Application Notes: Optimal working dilution should be determined by the investigator.

Comment: Preparation method: in vitro, wheat germ expression system
Product Quality tested by: 12.5% SDS-PAGE Stained with Coomassie Blue.

Restrictions: For Research Use only

Handling

Buffer: 50 mM Tris-HCl, 10 mM reduced Glutathione, pH =8.0 in the elution buffer.

Handling Advice: Aliquot to avoid repeated freezing and thawing.

Storage: -80 °C

Storage Comment: Best use within three months from the date of receipt of this protein.

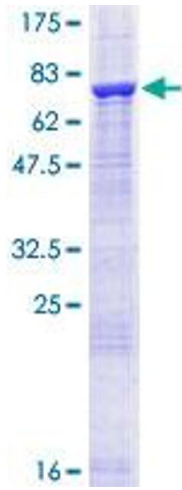


Image 1.