



Datasheet for ABIN1305698
ACRBP Protein (AA 1-543) (GST tag)



[Go to Product page](#)

1 Image

Overview

Quantity:	10 µg
Target:	ACRBP
Protein Characteristics:	AA 1-543
Origin:	Human
Source:	Wheat germ
Protein Type:	Recombinant
Purification tag / Conjugate:	This ACRBP protein is labelled with GST tag.
Application:	ELISA, Western Blotting (WB), Affinity Purification (AP), Antibody Array (AA)

Product Details

Purpose:	ACRBP (Human) Recombinant Protein (P01)
Sequence:	MRKPAAGFLP SLLKVLPL APAAAQDSTQ ASTPGSPLSP TEYERFFALL TPTWKAETTC RLRATHGCRN PTLVQLDQYE NHGLVPDGAV CSNLPYASWF ESFCQFTHYR CSNHVYYAKR VLCSQPVSIL SPNTLKEIEA SAEVSPTTMT SPISPHFTVT ERQTFQPWPE RLSNNVEELL QSSLSLGGQE QAPEHKQEQG VEHRQEPTQE HKQEEGQKQE EQEEEQEEEG KQEEGQGTKE GREAVSQLQT DSEPKFHSES LSSNPSSFAP RVREVESTPM IMENIQELIR SAQEIDEMNE IYDENSYWRN QNPGSLLQLP HTEALLVLCY SIVENTCIIT PTAKAWKYME EEILGFGKSV CDSLGRRHMS TCALCDFCSL KLEQCHSEAS LQRQCDTSH KTFVSPPLA SQSLSIGNQV GSPESGRFYG LDLYGGLHMD FWCARLATKG CEDVRVSGWL QTEFLSFQDG DFPTKICDTD YIQYPNYCSF KSQQCLMRNR NRKVSRRMRL QNETYSALSP GKSEDVVLRW SQEFSTLTG QFG
Characteristics:	Human ACRBP full-length ORF (NP_115878.2, 1 a.a. - 543 a.a.) recombinant protein with GST-tag at N-terminal.

Product Details

Purification: in vitro wheat germ expression system

Target Details

Target: ACRBP

Alternative Name: ACRBP ([ACRBP Products](#))

Background: Full Gene Name: acrosin binding protein
Synonyms: FLJ51160,OY-TES-1,SP32

Gene ID: 84519

NCBI Accession: [NM_032489](#)

Application Details

Application Notes: Optimal working dilution should be determined by the investigator.

Comment: Preparation method: in vitro, wheat germ expression system
Product Quality tested by: 12.5% SDS-PAGE Stained with Coomassie Blue.

Restrictions: For Research Use only

Handling

Buffer: 50 mM Tris-HCl, 10 mM reduced Glutathione, pH =8.0 in the elution buffer.

Handling Advice: Aliquot to avoid repeated freezing and thawing.

Storage: -80 °C

Storage Comment: Best use within three months from the date of receipt of this protein.

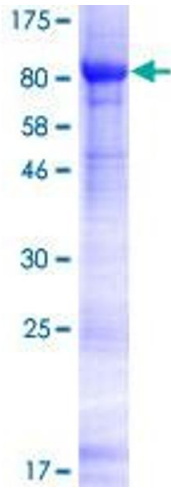


Image 1.