

Datasheet for ABIN1305700  
**ACRC Protein (AA 592-691) (GST tag)**



[Go to Product page](#)

1 Image

Overview

Quantity:	10 µg
Target:	ACRC
Protein Characteristics:	AA 592-691
Origin:	Human
Source:	Wheat germ
Protein Type:	Recombinant
Purification tag / Conjugate:	This ACRC protein is labelled with GST tag.
Application:	ELISA, Western Blotting (WB), Affinity Purification (AP), Antibody Array (AA)

Product Details

Purpose:	ACRC (Human) Recombinant Protein (Q01)
Sequence:	HEMCHAASWL IDGIHDSHGD AWKYYARKSN RIHPELPRVT RCHNYKINYK VHYECTGCKT RIGCYTKSLD TSRFICAKCK GSLVMVPLTQ KDGTRIVPHV
Characteristics:	Human ACRC partial ORF ( NP_443189.1, 592 a.a. - 691 a.a.) recombinant protein with GST-tag at N-terminal.
Purification:	in vitro wheat germ expression system

Target Details

Target:	ACRC
Alternative Name:	ACRC ( <a href="#">ACRC Products</a> )

## Target Details

Background: Full Gene Name: acidic repeat containing  
Synonyms: NAAR1

Gene ID: 93953

NCBI Accession: [NM\\_052957](#)

## Application Details

Application Notes: Optimal working dilution should be determined by the investigator.

Comment: Preparation method: in vitro, wheat germ expression system  
Product Quality tested by: 12.5% SDS-PAGE Stained with Coomassie Blue.

Restrictions: For Research Use only

## Handling

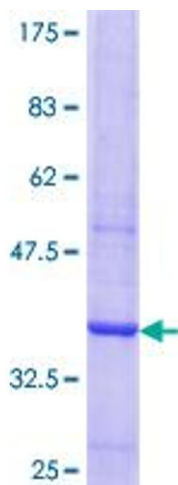
Buffer: 50 mM Tris-HCl, 10 mM reduced Glutathione, pH =8.0 in the elution buffer.

Handling Advice: Aliquot to avoid repeated freezing and thawing.

Storage: -80 °C

Storage Comment: Best use within three months from the date of receipt of this protein.

## Images



**Image 1.**