

Datasheet for ABIN1305735
Actin Protein (AA 1-377) (GST tag)



[Go to Product page](#)

1 Image

Overview

Quantity:	10 µg
Target:	Actin (ACTA1)
Protein Characteristics:	AA 1-377
Origin:	Human
Source:	Wheat germ
Protein Type:	Recombinant
Purification tag / Conjugate:	This Actin protein is labelled with GST tag.
Application:	ELISA, Western Blotting (WB), Affinity Purification (AP), Antibody Array (AA)

Product Details

Purpose:	ACTA1 (Human) Recombinant Protein (P01)
Sequence:	MCDEDETTAL VCDNGSGLVK AGFAGDDAPR AVFPSIVGRP RHQGMVGMG QKDSYVGDEA QSKRGILTLK YPIEHGIITN WDDMEKIWHH TFYNELRVAP EEHPTLLTEA PLNPKANREK MTQIMFETFN VPAMYVAIQA VLSLYASGRT TGIVLDSGDG VTHNVPIYEG YALPHAIMRL DLAGRDLDY LMKILTERGY SFVTTAEREI VRDIKEKLCY VALDFENEMA TAASSSSLEK SYELPDGQVI TIGNERFRCP ETLFQPSFIG MESAGIHETT YNSIMKCDID IRKDLYANNV MSGGTTMYPG IADRMQKEIT ALAPSTMKIK IIPPERKYS VWIGGSILAS LSTFQQMWIT KQEYDEAGPS IVHRKCF
Characteristics:	Human ACTA1 full-length ORF (NP_001091.1, 1 a.a. - 377 a.a.) recombinant protein with GST-tag at N-terminal.
Purification:	in vitro wheat germ expression system

Target Details

Target:	Actin (ACTA1)
Alternative Name:	ACTA1 (ACTA1 Products)
Background:	Full Gene Name: actin, alpha 1, skeletal muscle Synonyms: ACTA,ASMA,CFTD,CFTD1,CFTDM,MPFD,NEM1,NEM2,NEM3
Gene ID:	58
NCBI Accession:	NM_001100
Pathways:	Caspase Cascade in Apoptosis , Myometrial Relaxation and Contraction , Skeletal Muscle Fiber Development

Application Details

Application Notes:	Optimal working dilution should be determined by the investigator.
Comment:	Preparation method: in vitro, wheat germ expression system Product Quality tested by: 12.5% SDS-PAGE Stained with Coomassie Blue.
Restrictions:	For Research Use only

Handling

Buffer:	50 mM Tris-HCl, 10 mM reduced Glutathione, pH =8.0 in the elution buffer.
Handling Advice:	Aliquot to avoid repeated freezing and thawing.
Storage:	-80 °C
Storage Comment:	Best use within three months from the date of receipt of this protein.

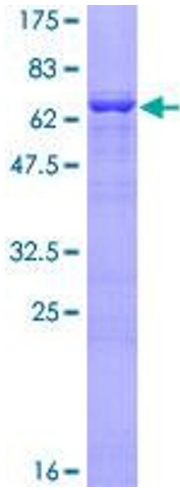


Image 1.