

Datasheet for ABIN1305863
ADAM22 Protein (AA 1-342) (GST tag)



[Go to Product page](#)

1 Image

Overview

Quantity:	10 µg
Target:	ADAM22
Protein Characteristics:	AA 1-342
Origin:	Human
Source:	Wheat germ
Protein Type:	Recombinant
Purification tag / Conjugate:	This ADAM22 protein is labelled with GST tag.
Application:	Western Blotting (WB), ELISA, Affinity Purification (AP), Antibody Array (AA)

Product Details

Purpose:	ADAM22 (Human) Recombinant Protein (P01)
Sequence:	<p>MQAAVAVSVP FLLLCVLGTC PPARCGQAGD ASLMELEKRK ENRFVERQSI VPLRLIYRSG GEDESRHDAL DTRVRGDVGG PQLTHVDQAS FQVDAFGTSF ILDVVLNHDHLSSEYIERHI EHGGKTVEVK GGEHCYYQGH IRGNPDSFVA LSTCHGLHGM FYDGNHTYLI EPEENDTTQE DFHFHSVYKS RLFEFSLDDL PSEFQQVNIT PSKFILKPRP KRSKRQLRRY PRNVEEETKY IELMIVNDHL MFKKHRLSVV HTNTYAKSVV NMADLIYKDQ LKTRIVLVAM ETWATDNKFA ISENPLITLR EFMKYRRDFI KEKSDAVHLF SYVTSVMMYY FF</p>
Characteristics:	Human ADAM22 full-length ORF (AAH36029.1, 1 a.a. - 342 a.a.) recombinant protein with GST-tag at N-terminal.
Purification:	in vitro wheat germ expression system

Target Details

Target:	ADAM22
Alternative Name:	ADAM22 (ADAM22 Products)
Background:	Full Gene Name: ADAM metallopeptidase domain 22 Synonyms: MDC2,MGC149832
Gene ID:	53616

Application Details

Application Notes:	Optimal working dilution should be determined by the investigator.
Comment:	Preparation method: in vitro, wheat germ expression system Product Quality tested by: 12.5% SDS-PAGE Stained with Coomassie Blue.
Restrictions:	For Research Use only

Handling

Buffer:	50 mM Tris-HCl, 10 mM reduced Glutathione, pH =8.0 in the elution buffer.
Handling Advice:	Aliquot to avoid repeated freezing and thawing.
Storage:	-80 °C
Storage Comment:	Best use within three months from the date of receipt of this protein.

Images

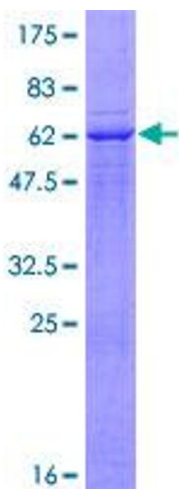


Image 1.