

Datasheet for ABIN1305870

ADAM32 Protein (AA 1-787) (GST tag)



[Go to Product page](#)

1 Image

Overview

Quantity:	25 µg
Target:	ADAM32
Protein Characteristics:	AA 1-787
Origin:	Human
Source:	Wheat germ
Protein Type:	Recombinant
Purification tag / Conjugate:	This ADAM32 protein is labelled with GST tag.
Application:	ELISA, Western Blotting (WB), Affinity Purification (AP), Antibody Array (AA)

Product Details

Purpose:	ADAM32 (Human) Recombinant Protein (P01)
Sequence:	<p>MFRLWLLLAG LCGLLASRPG FQNSLLQIVI PEKIQTNTND SSEIEYEQIS YIIPIDEKLY TVHLKQRYFL ADNFMIIYLYN QGSMNTYSSD IQTQCYQGN IEGYPDSMVT LSTCSGLRGI LQFENVSYGI EPLESAVEFQ HVLYKLNED NDIAIFIDRS LKEQPMDDNI FISEKSEPAV PDLFPLYLEM HIVVDKTLYD YWGSDSMIVT NKVIEIVGLA NSMFTQFKVT IVLSSLELWS DENKISTVGE ADELLQKFLE WKQSYLNLRP HDIAYLLIYM DYPRYLGAUF PGTMCITRYS AGVALYPKEI TLEAFVIVT QMLALSLGIS YDDPKKCQCS ESTCIMNPEV VQSNQVKTFS SCSLRSFQNF ISNVGVKCLQ NKPQMQKKSP KPVCNGRLE GNEICDCGTE AQC GPASCCD FRTCVLKDGA KCYKGLCCKD CQILQSGVEC RPKAHPECDI AENCNGSSPE CGPDITLING LSCKNNKFIC YDGDCHDLDA RCESVFGKGS RNAPFACYEE IQSQSDRFGN CGRDRNNKYV FCGWRNLICG RLVCTYPTRK PFHQENDVI YAFVRDSVCI TVDYKLPRTV PDPLAVKNGS QCDIGRVCVN RECVESRIIK ASAHVCSQQC SGHGVCDNRN KCHCSPGYKP PNCQIRSKGF</p>

Product Details

SIFPEEDMGS IMERASGKTE NTWLLGFLIA LPILIVTTAI VLARKQLKKW FAKEEEFPSS
ESKSEGSTQT YASQSSSEGS TQTYASQTRS ESSSQADTSK SKSEDSAEAY TSRSKSQDST
QTQSSSN

Characteristics: Human ADAM32 full-length ORF (AAH26169.1, 1 a.a. - 787 a.a.) recombinant protein with GST-tag at N-terminal.

Purification: in vitro wheat germ expression system

Target Details

Target: ADAM32

Alternative Name: ADAM32 ([ADAM32 Products](#))

Background: Full Gene Name: ADAM metallopeptidase domain 32
Synonyms: FLJ26299,FLJ29004

Gene ID: 203102

Application Details

Application Notes: Optimal working dilution should be determined by the investigator.

Comment: Preparation method: in vitro, wheat germ expression system
Product Quality tested by: 12.5% SDS-PAGE Stained with Coomassie Blue.

Restrictions: For Research Use only

Handling

Buffer: 50 mM Tris-HCl, 10 mM reduced Glutathione, pH =8.0 in the elution buffer.

Handling Advice: Aliquot to avoid repeated freezing and thawing.

Storage: -80 °C

Storage Comment: Best use within three months from the date of receipt of this protein.

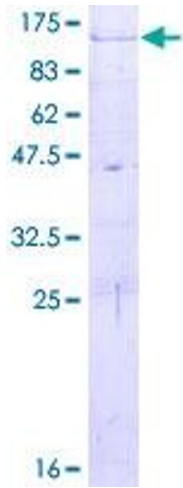


Image 1.