



[Go to Product page](#)

Datasheet for ABIN1305879

ADAM9 Protein (AA 36-135) (GST tag)

1 Image

Overview

Quantity:	10 µg
Target:	ADAM9
Protein Characteristics:	AA 36-135
Origin:	Human
Source:	Wheat germ
Protein Type:	Recombinant
Purification tag / Conjugate:	This ADAM9 protein is labelled with GST tag.
Application:	Western Blotting (WB), ELISA, Affinity Purification (AP), Antibody Array (AA)

Product Details

Purpose:	ADAM9 (Human) Recombinant Protein (Q01)
Sequence:	QTSHLSSYEI ITPWRLTRER REAPRPYSKQ VSYVIQAEGK EHIIHLERNK DLLPEDFVWY TYNKEGTLIT DHPNIQNHCH YRGYVEGVHN SSIALSDFCG
Characteristics:	Human ADAM9 partial ORF (NP_003807, 36 a.a. - 135 a.a.) recombinant protein with GST-tag at N-terminal.
Purification:	in vitro wheat germ expression system

Target Details

Target:	ADAM9
Alternative Name:	ADAM9 (ADAM9 Products)

Target Details

Background:	Full Gene Name: ADAM metallopeptidase domain 9 (meltrin gamma) Synonyms: KIAA0021,MCMP,MDC9,Mltng
Gene ID:	8754
NCBI Accession:	NM_003816
Pathways:	Cellular Response to Molecule of Bacterial Origin, SARS-CoV-2 Protein Interactome

Application Details

Application Notes:	Optimal working dilution should be determined by the investigator.
Comment:	Preparation method: in vitro, wheat germ expression system Product Quality tested by: 12.5% SDS-PAGE Stained with Coomassie Blue.
Restrictions:	For Research Use only

Handling

Buffer:	50 mM Tris-HCl, 10 mM reduced Glutathione, pH =8.0 in the elution buffer.
Handling Advice:	Aliquot to avoid repeated freezing and thawing.
Storage:	-80 °C
Storage Comment:	Best use within three months from the date of receipt of this protein.

Images

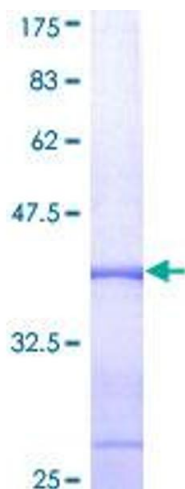


Image 1.