

Datasheet for ABIN1305949

ADCY10 Protein (AA 1504-1610) (GST tag)[Go to Product page](#)**1** Image

Overview

Quantity:	10 µg
Target:	ADCY10
Protein Characteristics:	AA 1504-1610
Origin:	Human
Source:	Wheat germ
Protein Type:	Recombinant
Purification tag / Conjugate:	This ADCY10 protein is labelled with GST tag.
Application:	Western Blotting (WB), ELISA, Affinity Purification (AP), Antibody Array (AA)

Product Details

Purpose:	SAC (Human) Recombinant Protein (Q01)
Sequence:	TTGPVFCPRL YHLMAYVCIL MGDGQKCGLF LNTALRLSET QGNILEKCWL NMNKESWYST SELKEDQWLQ TILSLPSWEK IVAGRVNIQD LQKNKFLMRA NTVDNHF
Characteristics:	Human SAC partial ORF (NP_060887, 1504 a.a. - 1610 a.a.) recombinant protein with GST-tag at N-terminal.
Purification:	in vitro wheat germ expression system

Target Details

Target:	ADCY10
Alternative Name:	ADCY10 (ADCY10 Products)

Target Details

Background: Full Gene Name: adenylate cyclase 10 (soluble)
Synonyms: HCA2,RP1-313L4.2,SAC,SACI,Sacy

Gene ID: 55811

NCBI Accession: [NM_018417](#)

Pathways: [cAMP Metabolic Process](#)

Application Details

Application Notes: Optimal working dilution should be determined by the investigator.

Comment: Preparation method: in vitro, wheat germ expression system
Product Quality tested by: 12.5% SDS-PAGE Stained with Coomassie Blue.

Restrictions: For Research Use only

Handling

Buffer: 50 mM Tris-HCl, 10 mM reduced Glutathione, pH =8.0 in the elution buffer.

Handling Advice: Aliquot to avoid repeated freezing and thawing.

Storage: -80 °C

Storage Comment: Best use within three months from the date of receipt of this protein.

Images

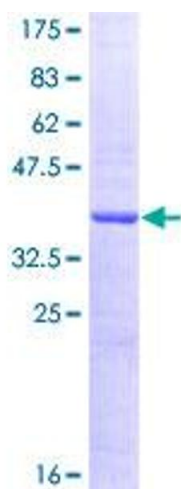


Image 1.