



[Go to Product page](#)

Datasheet for ABIN1305999

ADHFE1 Protein (AA 1-419) (GST tag)

1 Image

Overview

Quantity:	10 µg
Target:	ADHFE1
Protein Characteristics:	AA 1-419
Origin:	Human
Source:	Wheat germ
Protein Type:	Recombinant
Purification tag / Conjugate:	This ADHFE1 protein is labelled with GST tag.
Application:	Affinity Purification (AP), Antibody Array (AA), ELISA, Western Blotting (WB)

Product Details

Purpose:	ADHFE1 (Human) Recombinant Protein (P01)
Sequence:	MAVSNIRYGA AVTKEVGMDL KNMGAKNVCL MTDKNLSKLP PVQVAMDSLV KNGIPFTVYD NVRVEPTDSS FMEAIEFAQK GAFDAYVAVG GGSTMDTCKA ANLYASSPHS DFLDYVSAPI GKGKPVSVPL KPLIAVPTTS GTGSETTGVA IFDYEHLKVK IGITSRAIKP TLGLIDPLHT LHMPARWAN SGFDVLCHAL ESYTTLPHYHL RSPCPSNPIT RPAYQGSNPI SDIWAIHALR IVAKYLKRAV RNPDDLEARS HMHLASAFAG IGFGNAGVHL CHGMSYPISG LVKMYKAKDY NVDHPLVPHG LSVVLTSPAV FTFTAQMFPE RHLEMAEILG ADTRTARIQD AGLVLADTLR KFLFDLDVDD GLAAVGYSKA DIPALVKGTL PQERVTKLAP RPQSEEDLAA LFEASMKLY
Characteristics:	Human ADHFE1 full-length ORF (NP_653251.1, 1 a.a. - 419 a.a.) recombinant protein with GST-tag at N-terminal.
Purification:	in vitro wheat germ expression system

Target Details

Target:	ADHFE1
Alternative Name:	ADHFE1 (ADHFE1 Products)
Background:	Full Gene Name: alcohol dehydrogenase, iron containing, 1 Synonyms: ADH8,FLJ32430,HMFT2263,HOT,MGC48605
Gene ID:	137872
NCBI Accession:	NM_144650

Application Details

Application Notes:	Optimal working dilution should be determined by the investigator.
Comment:	Preparation method: in vitro, wheat germ expression system Product Quality tested by: 12.5% SDS-PAGE Stained with Coomassie Blue.
Restrictions:	For Research Use only

Handling

Buffer:	50 mM Tris-HCl, 10 mM reduced Glutathione, pH =8.0 in the elution buffer.
Handling Advice:	Aliquot to avoid repeated freezing and thawing.
Storage:	-80 °C
Storage Comment:	Best use within three months from the date of receipt of this protein.

Images

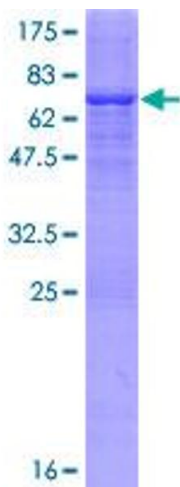


Image 1.