



[Go to Product page](#)

Datasheet for ABIN1306001

## ADHFE1 Protein (AA 329-418) (GST tag)

### 1 Image

#### Overview

Quantity:	10 µg
Target:	ADHFE1
Protein Characteristics:	AA 329-418
Origin:	Human
Source:	Wheat germ
Protein Type:	Recombinant
Purification tag / Conjugate:	This ADHFE1 protein is labelled with GST tag.
Application:	Affinity Purification (AP), Antibody Array (AA), ELISA, Western Blotting (WB)

#### Product Details

Purpose:	ADHFE1 (Human) Recombinant Protein (Q01)
Sequence:	PERHLEMAEI LGADTRTARI QDAGLVLADT LRKFLFDLDV DDGLAAVGYS KADIPALVKG TLPQERVTKL APRPQSEEDL AALFEASMKL
Characteristics:	Human ADHFE1 partial ORF ( NP_653251, 329 a.a. - 418 a.a.) recombinant protein with GST-tag at N-terminal.
Purification:	in vitro wheat germ expression system

#### Target Details

Target:	ADHFE1
Alternative Name:	ADHFE1 ( <a href="#">ADHFE1 Products</a> )

## Target Details

Background:	Full Gene Name: alcohol dehydrogenase, iron containing, 1 Synonyms: ADH8,FLJ32430,HMFT2263,HOT,MGC48605
Gene ID:	137872
NCBI Accession:	<a href="#">NM_144650</a>

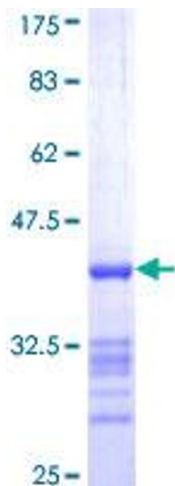
## Application Details

Application Notes:	Optimal working dilution should be determined by the investigator.
Comment:	Preparation method: in vitro, wheat germ expression system Product Quality tested by: 12.5% SDS-PAGE Stained with Coomassie Blue.
Restrictions:	For Research Use only

## Handling

Buffer:	50 mM Tris-HCl, 10 mM reduced Glutathione, pH =8.0 in the elution buffer.
Handling Advice:	Aliquot to avoid repeated freezing and thawing.
Storage:	-80 °C
Storage Comment:	Best use within three months from the date of receipt of this protein.

## Images



**Image 1.**