



[Go to Product page](#)

Datasheet for ABIN1306026

MLZE Protein (AA 1-508) (GST tag)

1 Image

Overview

Quantity:	10 µg
Target:	MLZE
Protein Characteristics:	AA 1-508
Origin:	Human
Source:	Wheat germ
Protein Type:	Recombinant
Purification tag / Conjugate:	This MLZE protein is labelled with GST tag.
Application:	Western Blotting (WB), ELISA, Affinity Purification (AP), Antibody Array (AA)

Product Details

Purpose:	MLZE (Human) Recombinant Protein (P01)
Sequence:	MPSMLERISK NLVKEIGSKD LTSVKYLLSA TKLRQFVILR KKKDSRSSFW EQSDYVPVEF SLNDILEPSS SVLETVVTGP FHFSDIMIQL HKADMGVNNG IEVSVSGEAS VDHGCSLEFQ IVTIPSPNLE DFQKRKLLDP EPSFLKECRR RGDNLYVVTE AVELINNTVL YDSSSVNIGL KIALWITYGK GQGQGESLRV KKKALTLQKG MVMAYKRKQL VIKKAILIS DDDEQRTFQD EYEISEMVG Y CAARSEGLLP SFHTISPTLF NASSNDMMLK PELFLTQQFL SGHLPKYEQV HILPVGRIEE PFWQNFKHLQ EEVFQIKITL AQLSKDVQDV MFYSILAMLR DRGALQDLMN MLELDSSGHL DPGGAILKK LQQDSNHAWF NPKDPILYLL EAIMVLSDFQ HDLLACSMK RILLQQQELV RSILEPNFRY PWSIPFTLKP ELLAPLQSEG LAITYGLLEE CGLRTELDNP RSTWDVEAKM PLSALYGTLS LLQQLAEA
Characteristics:	Human MLZE full-length ORF (AAH35321.1, 1 a.a. - 508 a.a.) recombinant protein with GST-tag at N-terminal.

Product Details

Purification: in vitro wheat germ expression system

Target Details

Target: MLZE

Alternative Name: GSDMC ([MLZE Products](#))

Background: Full Gene Name: gasdermin C
Synonyms: MLZE

Gene ID: 56169

Application Details

Application Notes: Optimal working dilution should be determined by the investigator.

Comment: Preparation method: in vitro, wheat germ expression system
Product Quality tested by: 12.5% SDS-PAGE Stained with Coomassie Blue.

Restrictions: For Research Use only

Handling

Buffer: 50 mM Tris-HCl, 10 mM reduced Glutathione, pH =8.0 in the elution buffer.

Handling Advice: Aliquot to avoid repeated freezing and thawing.

Storage: -80 °C

Storage Comment: Best use within three months from the date of receipt of this protein.

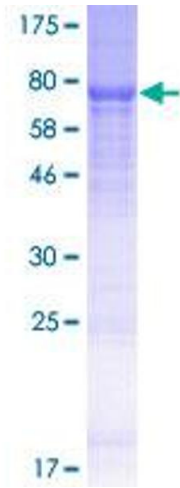


Image 1.