



[Go to Product page](#)

Datasheet for ABIN1306059

GSTA1 Protein (AA 1-222) (GST tag)

1 Image

Overview

Quantity:	10 µg
Target:	GSTA1
Protein Characteristics:	AA 1-222
Origin:	Human
Source:	Wheat germ
Protein Type:	Recombinant
Purification tag / Conjugate:	This GSTA1 protein is labelled with GST tag.
Application:	Western Blotting (WB), ELISA, Affinity Purification (AP), Antibody Array (AA)

Product Details

Purpose:	GSTA1 (Human) Recombinant Protein (P01)
Sequence:	MAEKPKLHYF NARGRMESTR WLLAAAGVEF EEKFIKSAED LDKLRNDGYL MFQQVPMVEI DGMKLVQTRA ILNYIASKYN LYGKDIKERA LIDMYIEGIA DLGEMILLLP VCPPEEKDAK LALIKEKIKN RYFPAFEKVL KSHGQDYLVG NKLSRADIHL VELLYYVEEL DSSLISSFPL LKALKTRISN LPTVKKFLQP GSPRKPPMDE KSLEEARKIF RF
Characteristics:	Human GSTA1 full-length ORF (AAH53578.1, 1 a.a. - 222 a.a.) recombinant protein with GST-tag at N-terminal.
Purification:	in vitro wheat germ expression system

Target Details

Target:	GSTA1
---------	-------

Target Details

Alternative Name:	GSTA1 (GSTA1 Products)
Background:	Full Gene Name: glutathione S-transferase alpha 1 Synonyms: GST2,GSTA1-1,GTH1,MGC131939
Gene ID:	2938

Application Details

Application Notes:	Optimal working dilution should be determined by the investigator.
Comment:	Preparation method: in vitro, wheat germ expression system Product Quality tested by: 12.5% SDS-PAGE Stained with Coomassie Blue.
Restrictions:	For Research Use only

Handling

Buffer:	50 mM Tris-HCl, 10 mM reduced Glutathione, pH =8.0 in the elution buffer.
Handling Advice:	Aliquot to avoid repeated freezing and thawing.
Storage:	-80 °C
Storage Comment:	Best use within three months from the date of receipt of this protein.

Images

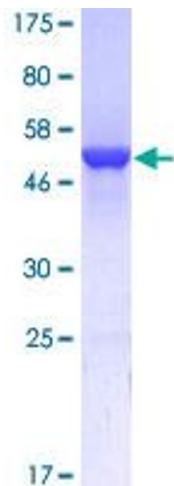


Image 1.