



[Go to Product page](#)

Datasheet for ABIN1306073

GSTCD Protein (AA 1-632) (GST tag)

1 Image

Overview

Quantity:	25 µg
Target:	GSTCD
Protein Characteristics:	AA 1-632
Origin:	Human
Source:	Wheat germ
Protein Type:	Recombinant
Purification tag / Conjugate:	This GSTCD protein is labelled with GST tag.
Application:	ELISA, Western Blotting (WB), Affinity Purification (AP), Antibody Array (AA)

Product Details

Purpose:	GSTCD (Human) Recombinant Protein (P01)
Sequence:	MKAIKKSLTE EEYLYLDFSH QTEGCIFPLH TSVTLFLLSY CDCKIFKICL VVTKEVSRDS SLLRDDLIQD VEIQIISRQE LPPIVQNCCL PAVVERSDNF CRAGLAVVLR HIIQKSYEAD PLKKELLELL GFKKTCLKAC AEVSQWTRLC ELTIPLAIEN FLRESSDQPP TIPVEILQLE KKLSEPVRVH NDDKLRRQKL KQQKADGVGP PLTKGKAKSK VHTQETSEGL DSSSKSLELK VAFSKLTVQE EPATTNREPS HIRKAKASDL PPLEHVFAEG LYFTLADIVL LPCIHHFLVI ISRKFSEKLV EFLLASWYQ RIQEVPGVKT ASKCGIQFLH LPKLLTTSTE QHPNLCEVPG VEEQSDPLFI GGPRPTMAKL MEKGIEVMFS PHPCPTWTLD WNVLPAAVSP KEGKMSSDRA LRKQQQLNNL VYVVTNQAKP GDRIVDFCSG GGHVGIVLAH MLPSCQVTLI ENKELSLIRA KKRSDDELGLS NIWFIQANME YFTGMFNIGV ALHACGVATD MVIEHCIKTR ASFVTCPCCY GFIQNTSKFN FPKSEQFKKT LSYKEHMILC RFADQTAVQL PPQRRLIGKQ CMCLVDLDRA RAAEECGYSV QVISMPEPESC SPKNNMIVGV PI

Product Details

Characteristics: Human GSTCD full-length ORF (NP_001026890.1, 1 a.a. - 632 a.a.) recombinant protein with GST-tag at N-terminal.

Purification: in vitro wheat germ expression system

Target Details

Target: GSTCD

Alternative Name: GSTCD ([GSTCD Products](#))

Background: Full Gene Name: glutathione S-transferase, C-terminal domain containing
Synonyms: DKFZp686I10174,FLJ13273

Gene ID: 79807

NCBI Accession: [NM_001031720](#)

Application Details

Application Notes: Optimal working dilution should be determined by the investigator.

Comment: Preparation method: in vitro, wheat germ expression system
Product Quality tested by: 12.5% SDS-PAGE Stained with Coomassie Blue.

Restrictions: For Research Use only

Handling

Buffer: 50 mM Tris-HCl, 10 mM reduced Glutathione, pH =8.0 in the elution buffer.

Handling Advice: Aliquot to avoid repeated freezing and thawing.

Storage: -80 °C

Storage Comment: Best use within three months from the date of receipt of this protein.

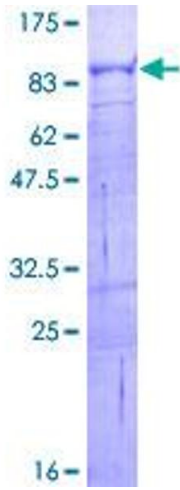


Image 1.