



[Go to Product page](#)

Datasheet for ABIN1306116

GTDC1 Protein (AA 1-373) (GST tag)

1 Image

Overview

Quantity:	25 µg
Target:	GTDC1
Protein Characteristics:	AA 1-373
Origin:	Human
Source:	Wheat germ
Protein Type:	Recombinant
Purification tag / Conjugate:	This GTDC1 protein is labelled with GST tag.
Application:	ELISA, Western Blotting (WB), Affinity Purification (AP), Antibody Array (AA)

Product Details

Purpose:	GTDC1 (Human) Recombinant Protein (P01)
Sequence:	MSILIEAFY GGSHKQLVDL LQEELGDCVV YTLPAKKWHW RARTSALYFS QTIPISEHYR TLFASSVLNL TELAALRPDL GKLKILYFH ENLIYPVKK CQERDFQYGY NQILSCLVAD VVVFNVSFNM ESFLTSMGKF MKLIPDHRPK DLESIIRPKC QVIYFPIRFP DVSRFMPKHK TTHLKKMLGL KGNGGAVLSM ALPFQPEQRD SEDLLKNFNS ECDTHCGLDT ARQEYLGNSL RQESDLKKST SSDNSSSHHG ENKQNLTVDP CDILGGVDNQ QRLHIVWPH RWLEAVYCGC YPLCPKDLVY PEIFPAEYLY STPEQLSKRL QNFCKRPDI RKHLYKGEIA PFSWAALHGK FRSLLTTEPR EDL
Characteristics:	Human GTDC1 full-length ORF (NP_078935.2, 1 a.a. - 373 a.a.) recombinant protein with GST-tag at N-terminal.
Purification:	in vitro wheat germ expression system

Target Details

Target:	GTDC1
Alternative Name:	GTDC1 (GTDC1 Products)
Background:	Full Gene Name: glycosyltransferase-like domain containing 1 Synonyms: mat-Xa
Gene ID:	79712
NCBI Accession:	NM_024659

Application Details

Application Notes:	Optimal working dilution should be determined by the investigator.
Comment:	Preparation method: in vitro, wheat germ expression system Product Quality tested by: 12.5% SDS-PAGE Stained with Coomassie Blue.
Restrictions:	For Research Use only

Handling

Buffer:	50 mM Tris-HCl, 10 mM reduced Glutathione, pH =8.0 in the elution buffer.
Handling Advice:	Aliquot to avoid repeated freezing and thawing.
Storage:	-80 °C
Storage Comment:	Best use within three months from the date of receipt of this protein.

Images

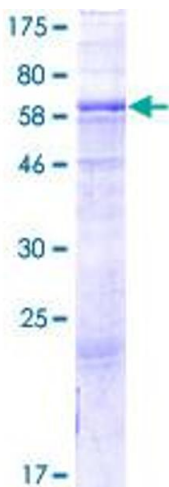


Image 1.