



[Go to Product page](#)

Datasheet for ABIN1306138

## GTF2F2 Protein (AA 1-249) (GST tag)

### 1 Image

#### Overview

Quantity:	10 µg
Target:	GTF2F2
Protein Characteristics:	AA 1-249
Origin:	Human
Source:	Wheat germ
Protein Type:	Recombinant
Purification tag / Conjugate:	This GTF2F2 protein is labelled with GST tag.
Application:	ELISA, Western Blotting (WB), Affinity Purification (AP), Antibody Array (AA)

#### Product Details

Purpose:	GTF2F2 (Human) Recombinant Protein (P01)
Sequence:	MAERGELDLT GAKQNTGVWL VKVPKYLSSQ WAKASGRGEV GKLRIAKTQG RTEVSFTLNE DLANIHDIGG KPASVSAPRE HPFVLQSVGG QTLTVFTSS SDKLSLEGIV VQRAECPAA SENYMRLKRL QIESSKPVR LSQQLDKVVT TNYKPVANHQ YNIEYERKKK EGGKRARADK QHVLDMLFSA FEKHQYYNLK DLVDITKQPV VYLKEILKEI GVQNVKGIHK NTWELKPEYR HYQGEEKSD
Characteristics:	Human GTF2F2 full-length ORF ( AAH01771, 1 a.a. - 249 a.a.) recombinant protein with GST-tag at N-terminal.
Purification:	in vitro wheat germ expression system

## Target Details

Target:	GTF2F2
Alternative Name:	GTF2F2 ( <a href="#">GTF2F2 Products</a> )
Background:	Full Gene Name: general transcription factor IIF, polypeptide 2, 30 kDa Synonyms: BTF4,RAP30,TF2F2,TFIIF
Gene ID:	2963
Pathways:	<a href="#">SARS-CoV-2 Protein Interactome</a>

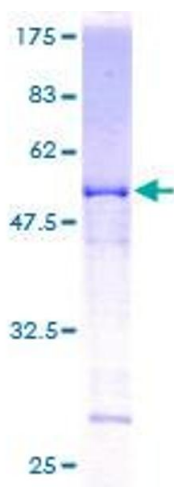
## Application Details

Application Notes:	Optimal working dilution should be determined by the investigator.
Comment:	Preparation method: in vitro, wheat germ expression system Product Quality tested by: 12.5% SDS-PAGE Stained with Coomassie Blue.
Restrictions:	For Research Use only

## Handling

Buffer:	50 mM Tris-HCl, 10 mM reduced Glutathione, pH =8.0 in the elution buffer.
Handling Advice:	Aliquot to avoid repeated freezing and thawing.
Storage:	-80 °C
Storage Comment:	Best use within three months from the date of receipt of this protein.

## Images



**Image 1.**