



[Go to Product page](#)

Datasheet for ABIN1306141

## GTF2H1 Protein (AA 449-548) (GST tag)

### 1 Image

#### Overview

Quantity:	10 µg
Target:	GTF2H1
Protein Characteristics:	AA 449-548
Origin:	Human
Source:	Wheat germ
Protein Type:	Recombinant
Purification tag / Conjugate:	This GTF2H1 protein is labelled with GST tag.
Application:	Western Blotting (WB), ELISA, Affinity Purification (AP), Antibody Array (AA)

#### Product Details

Purpose:	GTF2H1 (Human) Recombinant Protein (Q01)
Sequence:	INQMVPNDIQ SELKHLYVAV GELLRHFWSG FPVNTPFLEE KVVKMKSLE RFQVTKLCPF QEKIRRQYLS TNLVSHIEEM LQTAYNKLHT WQSRRMLMKT
Characteristics:	Human GTF2H1 partial ORF ( NP_005307, 449 a.a. - 548 a.a.) recombinant protein with GST-tag at N-terminal.
Purification:	in vitro wheat germ expression system

#### Target Details

Target:	GTF2H1
Alternative Name:	GTF2H1 ( <a href="#">GTF2H1 Products</a> )

## Target Details

Background:	Full Gene Name: general transcription factor IIH, polypeptide 1, 62 kDa Synonyms: BTF2,TFB1,TFIIH
Gene ID:	2965
NCBI Accession:	<a href="#">NM_005316</a>
Pathways:	<a href="#">DNA Damage Repair</a>

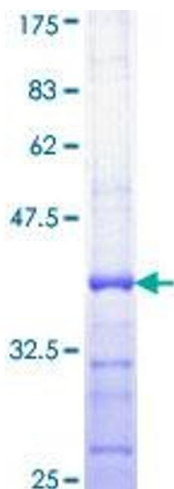
## Application Details

Application Notes:	Optimal working dilution should be determined by the investigator.
Comment:	Preparation method: in vitro, wheat germ expression system Product Quality tested by: 12.5% SDS-PAGE Stained with Coomassie Blue.
Restrictions:	For Research Use only

## Handling

Buffer:	50 mM Tris-HCl, 10 mM reduced Glutathione, pH =8.0 in the elution buffer.
Handling Advice:	Aliquot to avoid repeated freezing and thawing.
Storage:	-80 °C
Storage Comment:	Best use within three months from the date of receipt of this protein.

## Images



**Image 1.**