



[Go to Product page](#)

Datasheet for ABIN1306151

## GTF2H4 Protein (AA 363-462) (GST tag)

### 1 Image

#### Overview

Quantity:	10 µg
Target:	GTF2H4
Protein Characteristics:	AA 363-462
Origin:	Human
Source:	Wheat germ
Protein Type:	Recombinant
Purification tag / Conjugate:	This GTF2H4 protein is labelled with GST tag.
Application:	ELISA, Western Blotting (WB), Affinity Purification (AP), Antibody Array (AA)

#### Product Details

Purpose:	GTF2H4 (Human) Recombinant Protein (Q01)
Sequence:	QIIHFLRTRA HPVMLKQTPV LPPTITDQIR LWELERDRLR FTEGVLYNQF LSQVDFELL AHARELGVLV FENSAKRLMV VTPAGHSDVK RFWKRQKHSS
Characteristics:	Human GTF2H4 partial ORF ( AAH04935.1, 363 a.a. - 462 a.a.) recombinant protein with GST-tag at N-terminal.
Purification:	in vitro wheat germ expression system

#### Target Details

Target:	GTF2H4
Alternative Name:	GTF2H4 ( <a href="#">GTF2H4 Products</a> )

## Target Details

Background:	Gene: general transcription factor IIF, polypeptide 4, 52kDa Synonyms: TFB2, TFIIH
Gene ID:	2968
Pathways:	<a href="#">DNA Damage Repair</a>

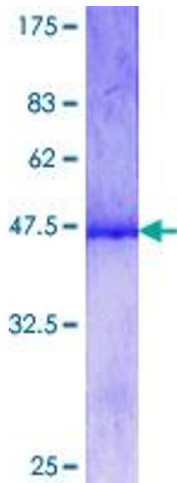
## Application Details

Application Notes:	Optimal working dilution should be determined by the investigator.
Restrictions:	For Research Use only

## Handling

Buffer:	50 mM Tris-HCl, 10 mM reduced Glutathione, pH =8.0 in the elution buffer.
Handling Advice:	Aliquot to avoid repeated freezing and thawing.
Storage:	-80 °C
Storage Comment:	Best use within three months from the date of receipt of this protein.

## Images



**Image 1.**