



[Go to Product page](#)

Datasheet for ABIN1306169

## GTF3C2 Protein (AA 1-911) (GST tag)

### 1 Image

#### Overview

Quantity:	10 µg
Target:	GTF3C2
Protein Characteristics:	AA 1-911
Origin:	Human
Source:	Wheat germ
Protein Type:	Recombinant
Purification tag / Conjugate:	This GTF3C2 protein is labelled with GST tag.
Application:	ELISA, Western Blotting (WB), Affinity Purification (AP), Antibody Array (AA)

#### Product Details

Purpose:	GTF3C2 (Human) Recombinant Protein (P01)
Sequence:	<p>MDTCGVGYVA LGEAGVGNM TVVDSPGQEV LNQLDVKTSS EMTSAEASVE MSLPTPLPGF</p> <p>EDSPDQRRRLP PEQESLSRLE QPDLSSSEMSK VSKPRASKPG RKRGGTRTRKG PKRPQQPNPP</p> <p>SAPLVPGLLD QSNPLSTPMP KKRGRKSKAE LLLLKLSKDL DRPESQSPKR PPEDFETPSG</p> <p>ERPRRRAAQV ALLYLQELAE ELSTALPAPV SCPEGPKVSS PTKPKKIRQP AACPGGEEVD</p> <p>GAPRDEDFLL QVEAEDVEES EGPSESSSEP EPVVPRSTPR GSTSGKQKPH CRGMAPNGLP</p> <p>DHIMAPVWKC LHCLKDFREQ KHSYWEFAEW IPLAWKWHLL SELEAAPYLP QEEKSPLFSV</p> <p>QREGLPEDGT LYRINRFSSI TAHPERWDVS FFTGGPLWAL DWCPVPEGAG ASQYVALFSS</p> <p>PDMNETHPLS QLHSGPGLLQ LWGLGTLQQE SCPGNRAHFV YGIACDNGCI WDLKFCPSGA</p> <p>WELPGTPRKA PLLPRLGLLA LACSDGKVLL FSLPHPEALL AQQPPDAVKP AIYKVQCVAT</p> <p>LQVGSMQATD PSECGQCLSL AWMPTRPHQH LAAGYYNGMV VFWNLPTNSP LQIRLSDGGS</p> <p>LKLYPFQCFL AHDQAVRTLQ WCKANSHFLV SAGSDRKIKF WDLRRPYEPI NSIKRFLSTE</p>

## Product Details

---

LAWLLPYNGV TVAQDNCYAS YGLCGIHYID AGYLGFKAYF TAPRKGTVWS LSGSDWLGTI  
AAGDISGELI AAILPDMALN PINVKRPVER RFPIYKADLI PYQDSPEGPD HSSASSGVPN  
PPKARTYTET VNHYYLLFQD TDLGSFHDLL RREPMLRMQE GEGHSQLCLD RLQLEAIHKV  
RFSPNLDSYG WLVSQGQSGL VRIHFVRGLA SPLGHRMQLE SRAHFNAMFQ PSSPTRRPGF  
SPTSHRLLPT P

Characteristics: Human GTF3C2 full-length ORF ( AAH20981, 1 a.a. - 911 a.a.) recombinant protein with GST-tag at N-terminal.

Purification: in vitro wheat germ expression system

## Target Details

---

Target: GTF3C2

Alternative Name: GTF3C2 ([GTF3C2 Products](#))

Background: Gene: general transcription factor IIIC, polypeptide 2, beta 110kDa  
Synonyms: KIAA0011, TFIIC-BETA, TFIIC110

Gene ID: 2976

## Application Details

---

Application Notes: Optimal working dilution should be determined by the investigator.

Restrictions: For Research Use only

## Handling

---

Buffer: 50 mM Tris-HCl, 10 mM reduced Glutathione, pH =8.0 in the elution buffer.

Handling Advice: Aliquot to avoid repeated freezing and thawing.

Storage: -80 °C

Storage Comment: Best use within three months from the date of receipt of this protein.

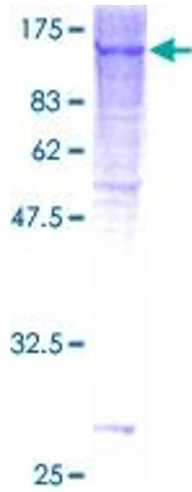


Image 1.