

Datasheet for ABIN1306190  
**GTPBP5 Protein (AA 1-406) (GST tag)**



[Go to Product page](#)

1 Image

## Overview

Quantity:	25 µg
Target:	GTPBP5
Protein Characteristics:	AA 1-406
Origin:	Human
Source:	Wheat germ
Protein Type:	Recombinant
Purification tag / Conjugate:	This GTPBP5 protein is labelled with GST tag.
Application:	ELISA, Western Blotting (WB), Affinity Purification (AP), Antibody Array (AA)

## Product Details

Purpose:	GTPBP5 (Human) Recombinant Protein (P01)
Sequence:	MAPARCF SAR LRTVFQGVGH WALSTWAGLK PSRLLPQRAS PRLLSVGRAD LAKHQELPGK KLLSEKKLKR YFVDYRRVLV CGGNGGAGAS CFHSEPRKEF GGPDGGDGGN GGHVILRVDQ QVKSLSVLS RYQGFSGEDG GSKNCFGRSG AVL YIRVPVG TLVKEGGRVV ADLSCVGDEY IAALGGAGGK GNRFFLANNN RAPVTCTPGQ PGQQRVLHLE LKTVAHAGMV GFPNAGKSSL LRAISNARPA VASYPFTTLK PHVGIVHYEG HLQIAVADIP GIIRGAHQNR GLGSAFLRHI ERCRFLFV V DLSQPEPWTQ VDDLKYELEM YEKGLSARPH AIVANKIDL P EAQANLSQLR DHLGQEVIVL SALTGENLEQ LLLHLKVLYD AYAEAELGQG RQPLRW
Characteristics:	Human GTPBP5 full-length ORF ( NP_056481.1, 1 a.a. - 406 a.a.) recombinant protein with GST-tag at N-terminal.
Purification:	in vitro wheat germ expression system

## Target Details

Target:	GTPBP5
Alternative Name:	GTPBP5 ( <a href="#">GTPBP5 Products</a> )
Background:	Full Gene Name: GTP binding protein 5 (putative) Synonyms: FLJ10741,MGC29512,ObgH1,dJ1005F21.2
Gene ID:	26164
NCBI Accession:	<a href="#">NM_015666</a>

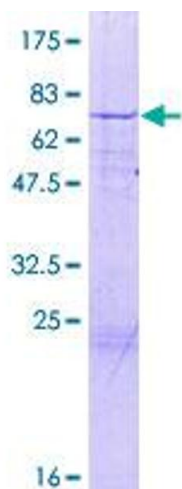
## Application Details

Application Notes:	Optimal working dilution should be determined by the investigator.
Comment:	Preparation method: in vitro, wheat germ expression system Product Quality tested by: 12.5% SDS-PAGE Stained with Coomassie Blue.
Restrictions:	For Research Use only

## Handling

Buffer:	50 mM Tris-HCl, 10 mM reduced Glutathione, pH =8.0 in the elution buffer.
Handling Advice:	Aliquot to avoid repeated freezing and thawing.
Storage:	-80 °C
Storage Comment:	Best use within three months from the date of receipt of this protein.

## Images



**Image 1.**