



[Go to Product page](#)

Datasheet for ABIN1306198

GTSF1L Protein (AA 1-148) (GST tag)

1 Image

Overview

Quantity:	10 µg
Target:	GTSF1L
Protein Characteristics:	AA 1-148
Origin:	Human
Source:	Wheat germ
Protein Type:	Recombinant
Purification tag / Conjugate:	This GTSF1L protein is labelled with GST tag.
Application:	ELISA, Western Blotting (WB), Affinity Purification (AP), Antibody Array (AA)

Product Details

Purpose:	C20orf65 (Human) Recombinant Protein (P01)
Sequence:	MEPEAFEICP YDPHHRIPLS RFQYHLASCR RKNPKKAKKM ATCKYNACHV VPIKNLEEHE AVCVNRSAGE EEDTENPLKV SPPSSEQNDD TQQVSPCLPS PDIWNVDGAN CQHVFVLKTF FPQKVCEND TKESARETSP QKILRPGQ
Characteristics:	Human C20orf65 full-length ORF (NP_789761.1, 1 a.a. - 148 a.a.) recombinant protein with GST-tag at N-terminal.
Purification:	in vitro wheat germ expression system

Target Details

Target:	GTSF1L
Alternative Name:	GTSF1L (GTSF1L Products)

Target Details

Background:	Full Gene Name: gametocyte specific factor 1-like Synonyms: C20orf65,FAM112A,MGC50820,dJ1028D15.4
Gene ID:	149699
NCBI Accession:	NM_176791

Application Details

Application Notes:	Optimal working dilution should be determined by the investigator.
Comment:	Preparation method: in vitro, wheat germ expression system Product Quality tested by: 12.5% SDS-PAGE Stained with Coomassie Blue.
Restrictions:	For Research Use only

Handling

Buffer:	50 mM Tris-HCl, 10 mM reduced Glutathione, pH =8.0 in the elution buffer.
Handling Advice:	Aliquot to avoid repeated freezing and thawing.
Storage:	-80 °C
Storage Comment:	Best use within three months from the date of receipt of this protein.

Images

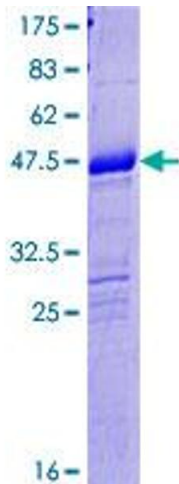


Image 1.