



[Go to Product page](#)

Datasheet for ABIN1306222

GUCY2D Protein (AA 521-630) (GST tag)

1 Image

Overview

Quantity:	10 µg
Target:	GUCY2D
Protein Characteristics:	AA 521-630
Origin:	Human
Source:	Wheat germ
Protein Type:	Recombinant
Purification tag / Conjugate:	This GUCY2D protein is labelled with GST tag.
Application:	ELISA, Western Blotting (WB), Affinity Purification (AP), Antibody Array (AA)

Product Details

Purpose:	GUCY2D (Human) Recombinant Protein (Q01)
Sequence:	RKVAQGSRSS LGARMSDIR SGPSQHLDSP NIGVYEGDRV WLKKFPGDQH IAIRPATKTA FSKLQELRHE NVALYLGLFL ARGAECPAAL WEGNLAVVSE HCTRGSLQDL
Characteristics:	Human GUCY2D partial ORF (NP_000171, 521 a.a. - 630 a.a.) recombinant protein with GST-tag at N-terminal.
Purification:	in vitro wheat germ expression system

Target Details

Target:	GUCY2D
Alternative Name:	GUCY2D (GUCY2D Products)

Target Details

Background:	Full Gene Name: guanylate cyclase 2D, membrane (retina-specific) Synonyms: CORD5,CORD6,CYGD,GUC1A4,GUC2D,LCA,LCA1,RETGC-1,ROS-GC1,retGC
Gene ID:	3000
NCBI Accession:	NM_000180
Pathways:	Regulation of G-Protein Coupled Receptor Protein Signaling, Phototransduction

Application Details

Application Notes:	Optimal working dilution should be determined by the investigator.
Comment:	Preparation method: in vitro, wheat germ expression system Product Quality tested by: 12.5% SDS-PAGE Stained with Coomassie Blue.
Restrictions:	For Research Use only

Handling

Buffer:	50 mM Tris-HCl, 10 mM reduced Glutathione, pH =8.0 in the elution buffer.
Handling Advice:	Aliquot to avoid repeated freezing and thawing.
Storage:	-80 °C
Storage Comment:	Best use within three months from the date of receipt of this protein.

Images

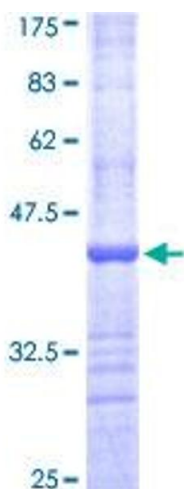


Image 1.