



Datasheet for ABIN1306248

CD236/GYPC Protein (AA 1-57) (GST tag)



[Go to Product page](#)

1 Image

Overview

Quantity:	10 µg
Target:	CD236/GYPC (GYPC)
Protein Characteristics:	AA 1-57
Origin:	Human
Source:	Wheat germ
Protein Type:	Recombinant
Purification tag / Conjugate:	This CD236/GYPC protein is labelled with GST tag.
Application:	Western Blotting (WB), ELISA, Affinity Purification (AP), Antibody Array (AA)

Product Details

Purpose:	GYPC (Human) Recombinant Protein (Q01)
Sequence:	MWSTRSPNST AWPLSLEPDP GMASASTTMH TTTIAEPDPG MSGWPDGRME TSTPTIM
Characteristics:	Human GYPC partial ORF (NP_002092, 1 a.a. - 57 a.a.) recombinant protein with GST-tag at N-terminal.
Purification:	in vitro wheat germ expression system

Target Details

Target:	CD236/GYPC (GYPC)
Alternative Name:	GYPC (GYPC Products)
Target Type:	Viral Protein

Target Details

Background:	Full Gene Name: glycophorin C (Gerbich blood group) Synonyms: CD236,CD236R,GE,GPC,GYPD,MGC117309,MGC126191,MGC126192
Gene ID:	2995
NCBI Accession:	NM_002101

Application Details

Application Notes:	Optimal working dilution should be determined by the investigator.
Comment:	Preparation method: in vitro, wheat germ expression system Product Quality tested by: 12.5% SDS-PAGE Stained with Coomassie Blue.
Restrictions:	For Research Use only

Handling

Buffer:	50 mM Tris-HCl, 10 mM reduced Glutathione, pH =8.0 in the elution buffer.
Handling Advice:	Aliquot to avoid repeated freezing and thawing.
Storage:	-80 °C
Storage Comment:	Best use within three months from the date of receipt of this protein.

Images

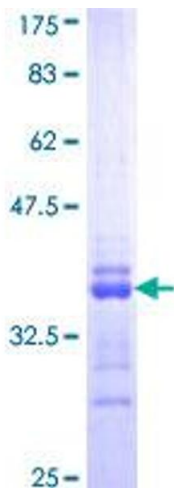


Image 1.