



[Go to Product page](#)

Datasheet for ABIN1306270

GZMH Protein (AA 161-246) (GST tag)

1 Image

Overview

Quantity:	10 µg
Target:	GZMH
Protein Characteristics:	AA 161-246
Origin:	Human
Source:	Wheat germ
Protein Type:	Recombinant
Purification tag / Conjugate:	This GZMH protein is labelled with GST tag.
Application:	Western Blotting (WB), ELISA, Affinity Purification (AP), Antibody Array (AA)

Product Details

Purpose:	GZMH (Human) Recombinant Protein (Q02)
Sequence:	EVLLTVQKDC QCERLFHGNY SRATEICVGD PKKTQTGFKG DSGGPLVCKD VAQGILSYGN KKGTPPGVYI KVSHFLPWIK RTMKRL
Characteristics:	Human GZMH partial ORF (NP_219491, 161 a.a. - 246 a.a.) recombinant protein with GST-tag at N-terminal.
Purification:	in vitro wheat germ expression system

Target Details

Target:	GZMH
Alternative Name:	GZMH (GZMH Products)

Target Details

Background:	Full Gene Name: granzyme H (cathepsin G-like 2, protein h-CCPX) Synonyms: CCP-X,CGL-2,CSP-C,CTLA1,CTSG2
Gene ID:	2999
NCBI Accession:	NM_033423

Application Details

Application Notes:	Optimal working dilution should be determined by the investigator.
Comment:	Preparation method: in vitro, wheat germ expression system Product Quality tested by: 12.5% SDS-PAGE Stained with Coomassie Blue.
Restrictions:	For Research Use only

Handling

Buffer:	50 mM Tris-HCl, 10 mM reduced Glutathione, pH =8.0 in the elution buffer.
Handling Advice:	Aliquot to avoid repeated freezing and thawing.
Storage:	-80 °C
Storage Comment:	Best use within three months from the date of receipt of this protein.

Images

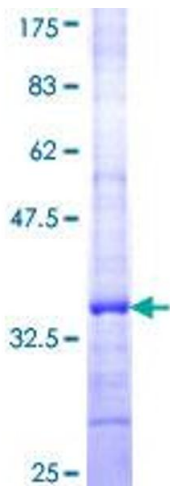


Image 1.