



[Go to Product page](#)

Datasheet for ABIN1306283

H1FX Protein (AA 1-213) (GST tag)

1 Image

Overview

Quantity:	10 µg
Target:	H1FX
Protein Characteristics:	AA 1-213
Origin:	Human
Source:	Wheat germ
Protein Type:	Recombinant
Purification tag / Conjugate:	This H1FX protein is labelled with GST tag.
Application:	ELISA, Western Blotting (WB), Affinity Purification (AP), Antibody Array (AA)

Product Details

Purpose:	H1FX (Human) Recombinant Protein (P01)
Sequence:	MSVELEEALP VTTAEGMAKK VTKAGGSAAL SPSKRRKNSK KKNQPGKYSQ LVVETIRRLG ERNGSSLAKI YTEAKKVPWF DQQNGRITYLK YSIKALVQND TLLQVKGTGA NGSFKLNRKK LEGGGERRGA PAAATAPAPT AHKAKKAAPG AAGSRADKK PARGQKPEQR SHKKGAGAKK DKGGKAKKTA AAGGKKVKKA AKPSVPKVPK GRK
Characteristics:	Human H1FX full-length ORF (NP_006017.1, 1 a.a. - 213 a.a.) recombinant protein with GST-tag at N-terminal.
Purification:	in vitro wheat germ expression system

Target Details

Target:	H1FX
---------	------

Target Details

Alternative Name:	H1FX (H1FX Products)
Background:	Full Gene Name: H1 histone family, member X Synonyms: H1X,MGC15959,MGC8350
Gene ID:	8971
NCBI Accession:	NM_006026

Application Details

Application Notes:	Optimal working dilution should be determined by the investigator.
Comment:	Preparation method: in vitro, wheat germ expression system Product Quality tested by: 12.5% SDS-PAGE Stained with Coomassie Blue.
Restrictions:	For Research Use only

Handling

Buffer:	50 mM Tris-HCl, 10 mM reduced Glutathione, pH =8.0 in the elution buffer.
Handling Advice:	Aliquot to avoid repeated freezing and thawing.
Storage:	-80 °C
Storage Comment:	Best use within three months from the date of receipt of this protein.

Images

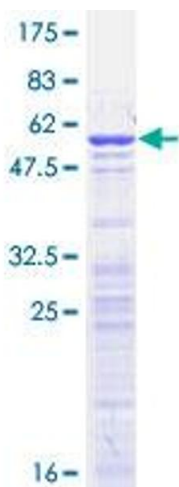


Image 1.