

Datasheet for ABIN1306324
HADHA Protein (AA 1-763) (GST tag)



[Go to Product page](#)

1 Image

Overview

Quantity:	25 µg
Target:	HADHA
Protein Characteristics:	AA 1-763
Origin:	Human
Source:	Wheat germ
Protein Type:	Recombinant
Purification tag / Conjugate:	This HADHA protein is labelled with GST tag.
Application:	ELISA, Western Blotting (WB), Affinity Purification (AP), Antibody Array (AA)

Product Details

Purpose:	HADHA (Human) Recombinant Protein (P01)
Sequence:	MVACRAIGIL SRFSAFRILR SRGYICRNFT GSSALLTRTH INYGVKGDVA VVRINSPNSK VNTLSKELHS EFSEVMNEIW ASDQIRSAVL ISSKPGCFIA GADINMLAAC KTLQEVTLQS QEAQRIVEKL EKSTKPIVAA INGSCLGGGL EVAISCQYRI ATKDRKTVLG TPEVLLGALP GAGGTQRLPK MVGVPAALDM MLTGRSIRAD RAKKMGLVDQ LVEPLGPGLK PPEERTIEYL EEVAITFAKG LADKKISPKR DKGLVEKLTA YAMTIPFVRQ QVYKKVEEKV RKQTKGLYPA PLKIIDVVKT GIEQGS DAGY LCESQKFGEL VMTKESKALM GLYHGQVLCK KNKFGAPQKD VKHLAILGAG LMGAGIAQVS VDKGLKTILK DATLTALDRG QQQVFKGLND KVKKKALTSF ERDSIFSNTL GQLDYQGF EK ADMVIEAVFE DLSLKHRVLK EVEAIPDHC IFASNTSALP ISEIAAVSKR PEKVIGMHYF SPVDKMQLE IITTEKTSKD TSASAVAVGL KQGKVIIVVK DGPGFYTTTC LAPMMSEVIR ILQEGVDPKK LDSLTTSFGF PVGAATLVDE VGVDVAKHVA EDLGKVFGER FGGNPELLT QMVS KGF LGR KSGKGFYIQ EGVKRKDLNS DMDSILASLK

Product Details

LPPKSEVSSD EDIQFRLVTR FVNEAVMCLQ EGILATPAEG DIGAVFGLGF PPCLGGPFRF
VDLYGAQKIV DRLKKYEAAAY GKQFTPCQLL ADHANSPNKK FYQ

Characteristics: Human HADHA full-length ORF (NP_000173.2, 1 a.a. - 763 a.a.) recombinant protein with GST-tag at N-terminal.

Purification: in vitro wheat germ expression system

Target Details

Target: HADHA

Alternative Name: HADHA ([HADHA Products](#))

Background: Full Gene Name: hydroxyacyl-Coenzyme A dehydrogenase/3-ketoacyl-Coenzyme A thiolase/enoyl-Coenzyme A hydratase (trifunctional protein), alpha subunit
Synonyms: ECHA,GBP,HADH,LCHAD,MGC1728,MTPA,TP-ALPHA

Gene ID: 3030

NCBI Accession: [NM_000182](#)

Pathways: [Monocarboxylic Acid Catabolic Process](#)

Application Details

Application Notes: Optimal working dilution should be determined by the investigator.

Comment: Preparation method: in vitro, wheat germ expression system
Product Quality tested by: 12.5% SDS-PAGE Stained with Coomassie Blue.

Restrictions: For Research Use only

Handling

Buffer: 50 mM Tris-HCl, 10 mM reduced Glutathione, pH =8.0 in the elution buffer.

Handling Advice: Aliquot to avoid repeated freezing and thawing.

Storage: -80 °C

Storage Comment: Best use within three months from the date of receipt of this protein.

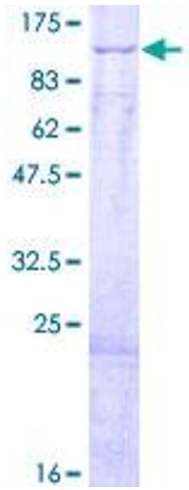


Image 1.