



[Go to Product page](#)

Datasheet for ABIN1306360

HARS1/Jo-1 Protein (AA 1-96) (GST tag)

1 Image

Overview

Quantity:	10 µg
Target:	HARS1/Jo-1 (HARS1)
Protein Characteristics:	AA 1-96
Origin:	Human
Source:	Wheat germ
Protein Type:	Recombinant
Purification tag / Conjugate:	This HARS1/Jo-1 protein is labelled with GST tag.
Application:	Western Blotting (WB), ELISA, Affinity Purification (AP), Antibody Array (AA)

Product Details

Purpose:	HARS (Human) Recombinant Protein (Q01)
Sequence:	MAERAAL EEL VKLQGERVRG LKQQKASAEL IEEEVAKLLK LKAQLGPDES KQKFVLKTPK GTRDYSRQM AVREKVFVDVI IRCFKRHGAE VIDTPV
Characteristics:	Human HARS partial ORF (NP_002100, 1 a.a. - 96 a.a.) recombinant protein with GST-tag at N-terminal.
Purification:	in vitro wheat germ expression system

Target Details

Target:	HARS1/Jo-1 (HARS1)
Alternative Name:	HARS (HARS1 Products)

Target Details

Background: Full Gene Name: histidyl-tRNA synthetase
Synonyms: FLJ20491,HRS

Gene ID: 3035

NCBI Accession: [NM_002109](#)

Application Details

Application Notes: Optimal working dilution should be determined by the investigator.

Comment: Preparation method: in vitro, wheat germ expression system
Product Quality tested by: 12.5% SDS-PAGE Stained with Coomassie Blue.

Restrictions: For Research Use only

Handling

Buffer: 50 mM Tris-HCl, 10 mM reduced Glutathione, pH =8.0 in the elution buffer.

Handling Advice: Aliquot to avoid repeated freezing and thawing.

Storage: -80 °C

Storage Comment: Best use within three months from the date of receipt of this protein.

Images

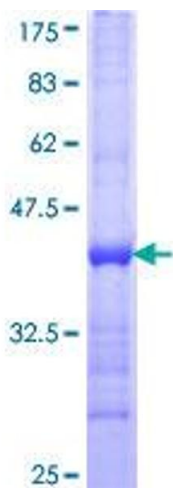


Image 1.