



[Go to Product page](#)

Datasheet for ABIN1306377

TIM3 Protein (AA 1-142) (GST tag)

1 Image

Overview

Quantity:	10 µg
Target:	TIM3 (TIM 3)
Protein Characteristics:	AA 1-142
Origin:	Human
Source:	Wheat germ
Protein Type:	Recombinant
Purification tag / Conjugate:	This TIM3 protein is labelled with GST tag.
Application:	Western Blotting (WB), ELISA, Affinity Purification (AP), Antibody Array (AA)

Product Details

Purpose:	HAVCR2 (Human) Recombinant Protein (P01)
Sequence:	MFSHLPFDCV LLLLLLLLTR SSEVEYRAEV QQNAYLPCFY TPAAPGNLVP VCWKGKACPV FECGNVVLRT DERDVNYWTS RYWLNGDFRK GDVSLTIENV TLADSGIYCC RIQIPGIMND EKFNLKLVIK PGEWTFACHL YE
Characteristics:	Human HAVCR2 full-length ORF (AAH20843, 1 a.a. - 142 a.a.) recombinant protein with GST-tag at N-terminal.
Purification:	in vitro wheat germ expression system

Target Details

Target:	TIM3 (TIM 3)
Alternative Name:	HAVCR2 (TIM 3 Products)

Target Details

Background:	Full Gene Name: hepatitis A virus cellular receptor 2 Synonyms: FLJ14428,KIM-3,TIM3,TIMD3,Tim-3
Gene ID:	84868
Pathways:	Regulation of Lipid Metabolism by PPARalpha , Cancer Immune Checkpoints

Application Details

Application Notes:	Optimal working dilution should be determined by the investigator.
Comment:	Preparation method: in vitro, wheat germ expression system Product Quality tested by: 12.5% SDS-PAGE Stained with Coomassie Blue.
Restrictions:	For Research Use only

Handling

Buffer:	50 mM Tris-HCl, 10 mM reduced Glutathione, pH =8.0 in the elution buffer.
Handling Advice:	Aliquot to avoid repeated freezing and thawing.
Storage:	-80 °C
Storage Comment:	Best use within three months from the date of receipt of this protein.

Images

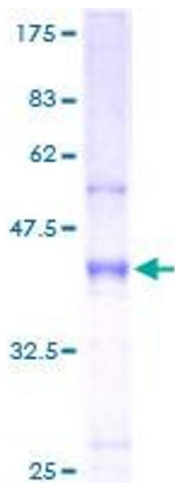


Image 1.