

Datasheet for ABIN1306486

**HDHD1 Protein (AA 107-212) (GST tag)**[Go to Product page](#)**1** Image

## Overview

Quantity:	10 µg
Target:	HDHD1
Protein Characteristics:	AA 107-212
Origin:	Human
Source:	Wheat germ
Protein Type:	Recombinant
Purification tag / Conjugate:	This HDHD1 protein is labelled with GST tag.
Application:	ELISA, Western Blotting (WB), Affinity Purification (AP), Antibody Array (AA)

## Product Details

Purpose:	HDHD1A (Human) Recombinant Protein (Q01)
Sequence:	DMKTSRHKEF FSLFSHIVLG DDPEVQHGKP DPDIFLACAK RFSPPPAMEK CLVFEDAPNG VEAALAAGMQ VVMVPDGNLS RDLTTKATLV LNSLQDFQPE LFGLPS
Characteristics:	Human HDHD1A partial ORF ( NP_036212.2, 107 a.a. - 212 a.a.) recombinant protein with GST-tag at N-terminal.
Purification:	in vitro wheat germ expression system

## Target Details

Target:	HDHD1
Alternative Name:	HDHD1A ( <a href="#">HDHD1 Products</a> )

## Target Details

Background:	Full Gene Name: haloacid dehalogenase-like hydrolase domain containing 1A Synonyms: DXF68S1E,FAM16AX,GS1
Gene ID:	8226
NCBI Accession:	<a href="#">NM_012080</a>

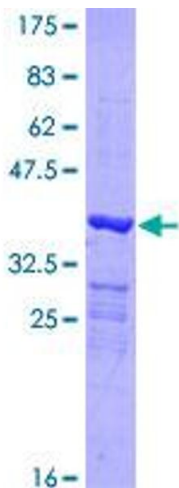
## Application Details

Application Notes:	Optimal working dilution should be determined by the investigator.
Comment:	Preparation method: in vitro, wheat germ expression system Product Quality tested by: 12.5% SDS-PAGE Stained with Coomassie Blue.
Restrictions:	For Research Use only

## Handling

Buffer:	50 mM Tris-HCl, 10 mM reduced Glutathione, pH =8.0 in the elution buffer.
Handling Advice:	Aliquot to avoid repeated freezing and thawing.
Storage:	-80 °C
Storage Comment:	Best use within three months from the date of receipt of this protein.

## Images



**Image 1.**