



[Go to Product page](#)

Datasheet for ABIN1306511

## HECTD3 Protein (AA 1-210) (GST tag)

### 1 Image

#### Overview

Quantity:	10 µg
Target:	HECTD3
Protein Characteristics:	AA 1-210
Origin:	Human
Source:	Wheat germ
Protein Type:	Recombinant
Purification tag / Conjugate:	This HECTD3 protein is labelled with GST tag.
Application:	ELISA, Western Blotting (WB), Affinity Purification (AP), Antibody Array (AA)

#### Product Details

Purpose:	HECTD3 (Human) Recombinant Protein (P01)
Sequence:	MEGMDKETFE FKFGKELTFT TVLSDQQVVE LIPGGAGIVV GYGDRSRFIQ LVQKARLEES KEQVAAMQAG LLKVVQPQAVL DLLTWQELEK KVCGDPEVTV DALRKLTRFE DFEPSDSRVQ YFWEALNNFT NEDRSRFLRF VTGRSRLPAR IYIYDPKLG Y ETTDALPESS TCSSTLFLPH YASAKVCEEK LRYAAYNCVA IDTDMSPWEE
Characteristics:	Human HECTD3 full-length ORF ( AAH19105.1, 1 a.a. - 210 a.a.) recombinant protein with GST-tag at N-terminal.
Purification:	in vitro wheat germ expression system

#### Target Details

Target:	HECTD3
---------	--------

## Target Details

Alternative Name:	HECTD3 ( <a href="#">HECTD3 Products</a> )
Background:	Full Gene Name: HECT domain containing 3 Synonyms: FLJ21156,FLJ31983,MGC161630,RP11-69J16.1
Gene ID:	79654

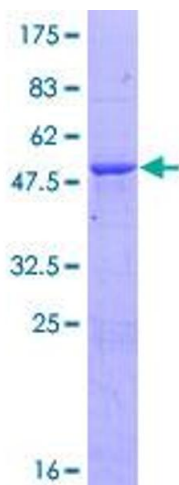
## Application Details

Application Notes:	Optimal working dilution should be determined by the investigator.
Comment:	Preparation method: in vitro, wheat germ expression system Product Quality tested by: 12.5% SDS-PAGE Stained with Coomassie Blue.
Restrictions:	For Research Use only

## Handling

Buffer:	50 mM Tris-HCl, 10 mM reduced Glutathione, pH =8.0 in the elution buffer.
Handling Advice:	Aliquot to avoid repeated freezing and thawing.
Storage:	-80 °C
Storage Comment:	Best use within three months from the date of receipt of this protein.

## Images



**Image 1.**