



[Go to Product page](#)

Datasheet for ABIN1306545  
**HES1 Protein (AA 1-277) (GST tag)**

1 Image

Overview

Quantity:	25 µg
Target:	HES1
Protein Characteristics:	AA 1-277
Origin:	Human
Source:	Wheat germ
Protein Type:	Recombinant
Purification tag / Conjugate:	This HES1 protein is labelled with GST tag.
Application:	Western Blotting (WB), ELISA, Affinity Purification (AP), Antibody Array (AA)

Product Details

Purpose:	HES1 (Human) Recombinant Protein (P01)
Sequence:	MPADIMEKNS SSPVAASVNT TPDKPKTASE HRKSSKPIME KRRRARINES LSQKTLILD ALKKDSSRHS KLEKADILEM TVKHRLRLQR AQMTAALSTD PSVLGKYRAG FSECMNEVTR FLSTCEGVNT EVRTRLLGHL ANCMTQINAM TYPGQPHPAL QAPPPPPPGP GGPQHAPFAP PPPLVPIPGG AAPPPGGAPC KLGSQAGEAA KVFGGFQVVP APDQGFAPLI PNGAFAHSGP VIPVYTSNSG TSVGPNVAVSP SSGPSLTADS MWRPWRN
Characteristics:	Human HES1 full-length ORF ( AAH39152.1, 1 a.a. - 277 a.a.) recombinant protein with GST-tag at N-terminal.
Purification:	in vitro wheat germ expression system

## Target Details

Target:	HES1
Alternative Name:	HES1 ( <a href="#">HES1 Products</a> )
Background:	Full Gene Name: hairy and enhancer of split 1, (Drosophila) Synonyms: FLJ20408,HES-1,HHL,HRY,bHLHb39
Gene ID:	3280
Pathways:	<a href="#">DNA Damage Repair</a>

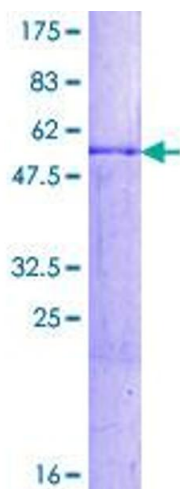
## Application Details

Application Notes:	Optimal working dilution should be determined by the investigator.
Comment:	Preparation method: in vitro, wheat germ expression system Product Quality tested by: 12.5% SDS-PAGE Stained with Coomassie Blue.
Restrictions:	For Research Use only

## Handling

Buffer:	50 mM Tris-HCl, 10 mM reduced Glutathione, pH =8.0 in the elution buffer.
Handling Advice:	Aliquot to avoid repeated freezing and thawing.
Storage:	-80 °C
Storage Comment:	Best use within three months from the date of receipt of this protein.

## Images



**Image 1.**