



[Go to Product page](#)

Datasheet for ABIN1306547

## HES1 Protein (AA 201-280) (GST tag)

### 1 Image

#### Overview

Quantity:	10 µg
Target:	HES1
Protein Characteristics:	AA 201-280
Origin:	Human
Source:	Wheat germ
Protein Type:	Recombinant
Purification tag / Conjugate:	This HES1 protein is labelled with GST tag.
Application:	Western Blotting (WB), ELISA, Affinity Purification (AP), Antibody Array (AA)

#### Product Details

Purpose:	HES1 (Human) Recombinant Protein (Q03)
Sequence:	APCKLGSQAG EAAKVFGGFQ VVPAPDGQFA FLIPNGAFAH SGPVIPVYTS NSGTSVGPNA VSPSSGPSLT AD SMWRPWRN
Characteristics:	Human HES1 partial ORF ( NP_005515.1, 201 a.a. - 280 a.a.) recombinant protein with GST-tag at N-terminal.
Purification:	in vitro wheat germ expression system

#### Target Details

Target:	HES1
Alternative Name:	HES1 ( <a href="#">HES1 Products</a> )

## Target Details

Background: Full Gene Name: hairy and enhancer of split 1, (Drosophila)

Synonyms: FLJ20408,HES-1,HHL,HRY,bHLHb39

Gene ID: 3280

NCBI Accession: [NM\\_005524](#)

Pathways: [DNA Damage Repair](#)

## Application Details

Application Notes: Optimal working dilution should be determined by the investigator.

Comment: Preparation method: in vitro, wheat germ expression system  
Product Quality tested by: 12.5% SDS-PAGE Stained with Coomassie Blue.

Restrictions: For Research Use only

## Handling

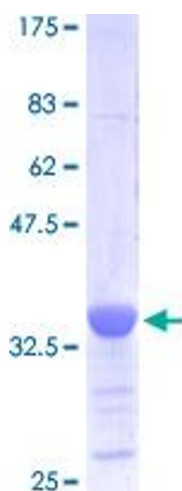
Buffer: 50 mM Tris-HCl, 10 mM reduced Glutathione, pH =8.0 in the elution buffer.

Handling Advice: Aliquot to avoid repeated freezing and thawing.

Storage: -80 °C

Storage Comment: Best use within three months from the date of receipt of this protein.

## Images



**Image 1.**