



[Go to Product page](#)

Datasheet for ABIN1306579

HFE Protein (AA 115-205) (GST tag)

1 Image

Overview

Quantity:	10 µg
Target:	HFE
Protein Characteristics:	AA 115-205
Origin:	Human
Source:	Wheat germ
Protein Type:	Recombinant
Purification tag / Conjugate:	This HFE protein is labelled with GST tag.
Application:	ELISA, Western Blotting (WB), Affinity Purification (AP), Antibody Array (AA)

Product Details

Purpose:	HFE (Human) Recombinant Protein (Q01)
Sequence:	SHTLQVILGC EMQEDNSTEG YWKYGYDGQD HLEFCPDTLD WRAAEPRAWP TKLEWERHKI RARQNRAYLE RDCPAQLQQL LELGRGVLDQ Q
Characteristics:	Human HFE partial ORF (NP_000401, 115 a.a. - 205 a.a.) recombinant protein with GST-tag at N-terminal.
Purification:	in vitro wheat germ expression system

Target Details

Target:	HFE
Alternative Name:	HFE (HFE Products)

Target Details

Background:	Full Gene Name: hemochromatosis Synonyms: HFE1,HH,HLA-H,MGC103790,dJ221C16.10.1
Gene ID:	3077
NCBI Accession:	NM_000410
Pathways:	Transition Metal Ion Homeostasis , Regulation of Leukocyte Mediated Immunity , Positive Regulation of Immune Effector Process

Application Details

Application Notes:	Optimal working dilution should be determined by the investigator.
Comment:	Preparation method: in vitro, wheat germ expression system Product Quality tested by: 12.5% SDS-PAGE Stained with Coomassie Blue.
Restrictions:	For Research Use only

Handling

Buffer:	50 mM Tris-HCl, 10 mM reduced Glutathione, pH =8.0 in the elution buffer.
Handling Advice:	Aliquot to avoid repeated freezing and thawing.
Storage:	-80 °C
Storage Comment:	Best use within three months from the date of receipt of this protein.

Images

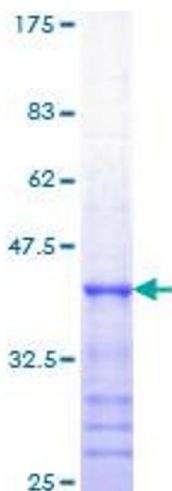


Image 1.