



[Go to Product page](#)

Datasheet for ABIN1306608

HHLA3 Protein (AA 1-53) (GST tag)

1 Image

Overview

Quantity:	10 µg
Target:	HHLA3
Protein Characteristics:	AA 1-53
Origin:	Human
Source:	Wheat germ
Protein Type:	Recombinant
Purification tag / Conjugate:	This HHLA3 protein is labelled with GST tag.
Application:	ELISA, Western Blotting (WB), Affinity Purification (AP), Antibody Array (AA)

Product Details

Purpose:	HHLA3 (Human) Recombinant Protein (Q01)
Sequence:	MFGACYKQPL KPSGSEPPAE ECRMTPRHAG CDVTEMQRIL SQPTFTEHLL RAV
Characteristics:	Human HHLA3 partial ORF (NP_009002, 1 a.a. - 53 a.a.) recombinant protein with GST-tag at N-terminal.
Purification:	in vitro wheat germ expression system

Target Details

Target:	HHLA3
Alternative Name:	HHLA3 (HHLA3 Products)
Background:	Full Gene Name: HERV-H LTR-associating 3

Target Details

Synonyms:

Gene ID: 11147

NCBI Accession: [NM_007071](#)

Application Details

Application Notes: Optimal working dilution should be determined by the investigator.

Comment: Preparation method: in vitro, wheat germ expression system
Product Quality tested by: 12.5% SDS-PAGE Stained with Coomassie Blue.

Restrictions: For Research Use only

Handling

Buffer: 50 mM Tris-HCl, 10 mM reduced Glutathione, pH =8.0 in the elution buffer.

Handling Advice: Aliquot to avoid repeated freezing and thawing.

Storage: -80 °C

Storage Comment: Best use within three months from the date of receipt of this protein.

Images

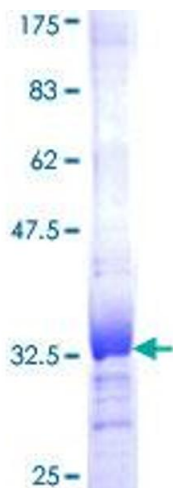


Image 1.