

Datasheet for ABIN1306616
NYS48/HAUS8 Protein (AA 1-248) (GST tag)



[Go to Product page](#)

1 Image

Overview

Quantity:	10 µg
Target:	NYS48/HAUS8 (HAUS8)
Protein Characteristics:	AA 1-248
Origin:	Human
Source:	Wheat germ
Protein Type:	Recombinant
Purification tag / Conjugate:	This NYS48/HAUS8 protein is labelled with GST tag.
Application:	ELISA, Western Blotting (WB), Affinity Purification (AP), Antibody Array (AA)

Product Details

Purpose:	NY-SAR-48 (Human) Recombinant Protein (P01)
Sequence:	MENNLAEFER RAEKNLLIMC KEKEKLQKKA HELKRRLLLS QRKRELADVL DAQIEMLSPF EAVATRFKEQ YRTFATALDT TRHELPVRSI HLEGDGQQLL DALQHELVTT QRLGELDVG DSEENVQVLD LSELKDVRTA KKDLELRRSF AQVLELSAEA SKEAALANQE VWEETQGMAP PSRWYFNQDS ACRESGGAPK NTPLSEDDNP GASSAPAQAT FISPSEDFSS SSQAEVPPSL SRSGRDLS
Characteristics:	Human NY-SAR-48 full-length ORF (AAH10176.1, 1 a.a. - 248 a.a.) recombinant protein with GST-tag at N-terminal.
Purification:	in vitro wheat germ expression system

Target Details

Target:	NYS48/HAUS8 (HAUS8)
Alternative Name:	HICE1 (HAUS8 Products)
Background:	Full Gene Name: HEC1/NDC80 interacting, centrosome associated 1 Synonyms: MGC20533,NY-SAR-48
Gene ID:	93323

Application Details

Application Notes:	Optimal working dilution should be determined by the investigator.
Comment:	Preparation method: in vitro, wheat germ expression system Product Quality tested by: 12.5% SDS-PAGE Stained with Coomassie Blue.
Restrictions:	For Research Use only

Handling

Buffer:	50 mM Tris-HCl, 10 mM reduced Glutathione, pH =8.0 in the elution buffer.
Handling Advice:	Aliquot to avoid repeated freezing and thawing.
Storage:	-80 °C
Storage Comment:	Best use within three months from the date of receipt of this protein.

Images

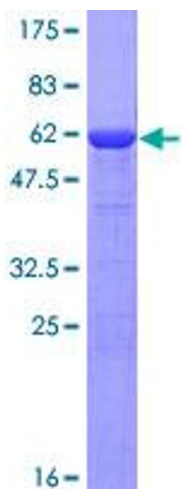


Image 1.