



[Go to Product page](#)

Datasheet for ABIN1306647

HIPK2 Protein (AA 961-1065) (GST tag)

1 Image

Overview

Quantity:	10 µg
Target:	HIPK2
Protein Characteristics:	AA 961-1065
Origin:	Human
Source:	Wheat germ
Protein Type:	Recombinant
Purification tag / Conjugate:	This HIPK2 protein is labelled with GST tag.
Application:	Western Blotting (WB), ELISA, Affinity Purification (AP), Antibody Array (AA)

Product Details

Purpose:	HIPK2 (Human) Recombinant Protein (Q01)
Sequence:	TGNPRTIIVP PLKTQASEVL VECDSLVPVN TSHHSSSYKS KSSSNVTSTS GHSSGSSSGA ITYRQQRPGP HFQQQQPLNL SQAQQHITTD RTGSHRRQQA YITPT
Characteristics:	Human HIPK2 partial ORF (AAG41236.1, 961 a.a. - 1065 a.a.) recombinant protein with GST-tag at N-terminal.
Purification:	in vitro wheat germ expression system

Target Details

Target:	HIPK2
Alternative Name:	HIPK2 (HIPK2 Products)

Target Details

Background:	Full Gene Name: homeodomain interacting protein kinase 2 Synonyms: DKFZp686K02111,FLJ23711,PRO0593
Gene ID:	28996
Pathways:	Cell Division Cycle

Application Details

Application Notes:	Optimal working dilution should be determined by the investigator.
Comment:	Preparation method: in vitro, wheat germ expression system Product Quality tested by: 12.5% SDS-PAGE Stained with Coomassie Blue.
Restrictions:	For Research Use only

Handling

Buffer:	50 mM Tris-HCl, 10 mM reduced Glutathione, pH =8.0 in the elution buffer.
Handling Advice:	Aliquot to avoid repeated freezing and thawing.
Storage:	-80 °C
Storage Comment:	Best use within three months from the date of receipt of this protein.

Images

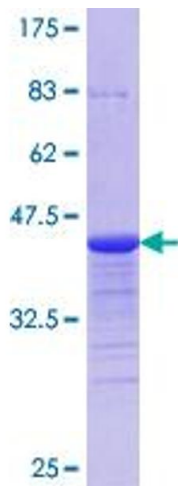


Image 1.