



[Go to Product page](#)

Datasheet for ABIN1306658

HIRA Protein (AA 908-1017) (GST tag)

1 Image

Overview

Quantity:	10 µg
Target:	HIRA
Protein Characteristics:	AA 908-1017
Origin:	Human
Source:	Wheat germ
Protein Type:	Recombinant
Purification tag / Conjugate:	This HIRA protein is labelled with GST tag.
Application:	ELISA, Western Blotting (WB), Affinity Purification (AP), Antibody Array (AA)

Product Details

Purpose:	HIRA (Human) Recombinant Protein (Q01)
Sequence:	HVVQQETTLA YLENQVAAAL TLQSSHEYRH WLLVYARYLV NEGFEYRLRE ICKDLLGPVH YSTGSQWEST VVGLRKRELL KELLPVIGQN LRFQRLFTEC QEQLDILRDK
Characteristics:	Human HIRA partial ORF (NP_003316.3, 908 a.a. - 1017 a.a.) recombinant protein with GST-tag at N-terminal.
Purification:	in vitro wheat germ expression system

Target Details

Target:	HIRA
Alternative Name:	HIRA (HIRA Products)

Target Details

Background:	Full Gene Name: HIR histone cell cycle regulation defective homolog A (<i>S. cerevisiae</i>) Synonyms: DGCR1,TUP1,TUPLE1
Gene ID:	7290
NCBI Accession:	NM_003325
Pathways:	Chromatin Binding

Application Details

Application Notes:	Optimal working dilution should be determined by the investigator.
Comment:	Preparation method: in vitro, wheat germ expression system Product Quality tested by: 12.5% SDS-PAGE Stained with Coomassie Blue.
Restrictions:	For Research Use only

Handling

Buffer:	50 mM Tris-HCl, 10 mM reduced Glutathione, pH =8.0 in the elution buffer.
Handling Advice:	Aliquot to avoid repeated freezing and thawing.
Storage:	-80 °C
Storage Comment:	Best use within three months from the date of receipt of this protein.

Images

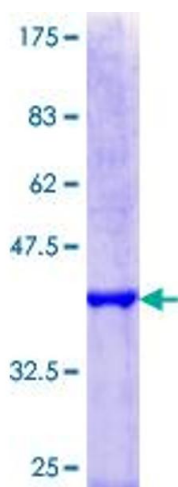


Image 1.