



[Go to Product page](#)

Datasheet for ABIN1306688

## HIST1H3E Protein (AA 69-125) (GST tag)

### 1 Image

#### Overview

Quantity:	10 µg
Target:	HIST1H3E
Protein Characteristics:	AA 69-125
Origin:	Human
Source:	Wheat germ
Protein Type:	Recombinant
Purification tag / Conjugate:	This HIST1H3E protein is labelled with GST tag.
Application:	Affinity Purification (AP), Antibody Array (AA), ELISA, Western Blotting (WB)

#### Product Details

Purpose:	HIST1H3E (Human) Recombinant Protein (Q01)
Sequence:	QLRVREIAQD FKTDLRFQSS AVMALQEACE AYLVLGFEDT NLCAIHAKRV TIMPKDI
Characteristics:	Human HIST1H3E partial ORF ( NP_003523, 69 a.a. - 125 a.a.) recombinant protein with GST-tag at N-terminal.
Purification:	in vitro wheat germ expression system

#### Target Details

Target:	HIST1H3E
Alternative Name:	HIST1H3E ( <a href="#">HIST1H3E Products</a> )
Background:	Full Gene Name: histone cluster 1, H3e

## Target Details

Synonyms: H3.1,H3/d,H3FD

Gene ID: 8353

NCBI Accession: [NM\\_003532](#)

## Application Details

Application Notes: Optimal working dilution should be determined by the investigator.

Comment: Preparation method: in vitro, wheat germ expression system  
Product Quality tested by: 12.5% SDS-PAGE Stained with Coomassie Blue.

Restrictions: For Research Use only

## Handling

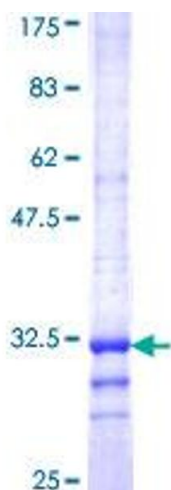
Buffer: 50 mM Tris-HCl, 10 mM reduced Glutathione, pH =8.0 in the elution buffer.

Handling Advice: Aliquot to avoid repeated freezing and thawing.

Storage: -80 °C

Storage Comment: Best use within three months from the date of receipt of this protein.

## Images



**Image 1.**