

Datasheet for ABIN1306691

## Histone Cluster 1, H3g (HIST1H3G) (AA 1-60) protein (GST tag)



[Go to Product page](#)

### 1 Image

#### Overview

Quantity:	10 µg
Target:	Histone Cluster 1, H3g (HIST1H3G)
Protein Characteristics:	AA 1-60
Origin:	Human
Source:	Wheat germ
Protein Type:	Recombinant
Purification tag / Conjugate:	GST tag
Application:	Affinity Purification (AP), Antibody Array (AA), ELISA, Western Blotting (WB)

#### Product Details

Purpose:	HIST1H3G (Human) Recombinant Protein (Q01)
Sequence:	MARTKQTARK STGGKAPRKQ LATKAARKSA PATGGVKKPH RYRPGTVALR EIRRYQKSTE
Characteristics:	Human HIST1H3G partial ORF ( NP_003525, 1 a.a. - 60 a.a.) recombinant protein with GST-tag at N-terminal.
Purification:	in vitro wheat germ expression system

#### Target Details

Target:	Histone Cluster 1, H3g (HIST1H3G)
Alternative Name:	HIST1H3G ( <a href="#">HIST1H3G Products</a> )
Background:	Full Gene Name: histone cluster 1, H3g

## Target Details

Synonyms: H3/h,H3FH

Gene ID: 8355

NCBI Accession: [NM\\_003534](#)

## Application Details

Application Notes: Optimal working dilution should be determined by the investigator.

Comment: Preparation method: in vitro, wheat germ expression system  
Product Quality tested by: 12.5% SDS-PAGE Stained with Coomassie Blue.

Restrictions: For Research Use only

## Handling

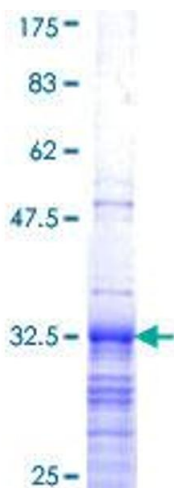
Buffer: 50 mM Tris-HCl, 10 mM reduced Glutathione, pH =8.0 in the elution buffer.

Handling Advice: Aliquot to avoid repeated freezing and thawing.

Storage: -80 °C

Storage Comment: Best use within three months from the date of receipt of this protein.

## Images



**Image 1.**