

Datasheet for ABIN1306708

HIST2H2BE Protein (AA 1-126) (GST tag)[Go to Product page](#)**1** Image

Overview

Quantity:	25 µg
Target:	HIST2H2BE
Protein Characteristics:	AA 1-126
Origin:	Human
Source:	Wheat germ
Protein Type:	Recombinant
Purification tag / Conjugate:	This HIST2H2BE protein is labelled with GST tag.
Application:	Western Blotting (WB), ELISA, Affinity Purification (AP), Antibody Array (AA)

Product Details

Purpose:	HIST2H2BE (Human) Recombinant Protein (P01)
Sequence:	MPEPAKSAPA PKKGSKKAVT KAQKKDGKKR KRSRKESYSI YVYKVLKQVH PDTGISSKAM GIMNSFVNDI FERIAGEASR LAHYNKRSTI TSREIQTAVR LLLPGELAKH AVSEGTKAVT KYTSSK
Characteristics:	Human HIST2H2BE full-length ORF (NP_003519.1, 1 a.a. - 126 a.a.) recombinant protein with GST-tag at N-terminal.
Purification:	in vitro wheat germ expression system

Target Details

Target:	HIST2H2BE
Alternative Name:	HIST2H2BE (HIST2H2BE Products)

Target Details

Background:	Full Gene Name: histone cluster 2, H2be Synonyms: GL105,H2B,H2B.1,H2B/q,H2BFQ,MGC119802,MGC119804,MGC129733,MGC129734
Gene ID:	8349
NCBI Accession:	NM_003528

Application Details

Application Notes:	Optimal working dilution should be determined by the investigator.
Comment:	Preparation method: in vitro, wheat germ expression system Product Quality tested by: 12.5% SDS-PAGE Stained with Coomassie Blue.
Restrictions:	For Research Use only

Handling

Buffer:	50 mM Tris-HCl, 10 mM reduced Glutathione, pH =8.0 in the elution buffer.
Handling Advice:	Aliquot to avoid repeated freezing and thawing.
Storage:	-80 °C
Storage Comment:	Best use within three months from the date of receipt of this protein.

Images

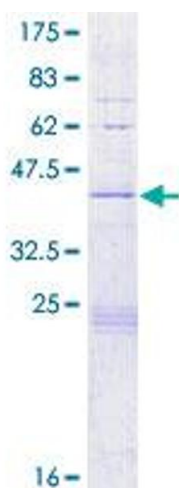


Image 1.