

Datasheet for ABIN1306712
Histone Cluster 2, H3c (HIST2H3C) (AA 1-136) protein (GST tag)



[Go to Product page](#)

1 Image

Overview

Quantity:	25 µg
Target:	Histone Cluster 2, H3c (HIST2H3C)
Protein Characteristics:	AA 1-136
Origin:	Human
Source:	Wheat germ
Protein Type:	Recombinant
Purification tag / Conjugate:	GST tag
Application:	Affinity Purification (AP), Antibody Array (AA), ELISA, Western Blotting (WB)

Product Details

Purpose:	HIST2H3C (Human) Recombinant Protein (P01)
Sequence:	MARTKQTARK STGGKAPRKQ LATKAARKSA PATGGVKKPH RYRPGTVALR EIRRYQKSTE LLIRKLPFQR LVREIAQDFK TDLRFQSSAV MALQEASEAY LVGLFEDTNL CAIHAKRVTI MPKDIQLARR IRGERA
Characteristics:	Human HIST2H3C full-length ORF (AAI53075.1, 1 a.a. - 136 a.a.) recombinant protein with GST-tag at N-terminal.
Purification:	in vitro wheat germ expression system

Target Details

Target:	Histone Cluster 2, H3c (HIST2H3C)
Alternative Name:	HIST2H3C (HIST2H3C Products)

Target Details

Background:	Full Gene Name: histone cluster 2, H3c Synonyms: H3,H3.2,H3/M,H3F2,H3FM,MGC9629
Gene ID:	126961

Application Details

Application Notes:	Optimal working dilution should be determined by the investigator.
Comment:	Preparation method: in vitro, wheat germ expression system Product Quality tested by: 12.5% SDS-PAGE Stained with Coomassie Blue.
Restrictions:	For Research Use only

Handling

Buffer:	50 mM Tris-HCl, 10 mM reduced Glutathione, pH =8.0 in the elution buffer.
Handling Advice:	Aliquot to avoid repeated freezing and thawing.
Storage:	-80 °C
Storage Comment:	Best use within three months from the date of receipt of this protein.

Images

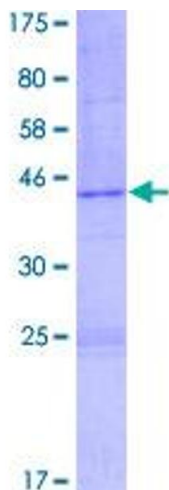


Image 1.