



[Go to Product page](#)

Datasheet for ABIN1306737

HKDC1 Protein (AA 102-200) (GST tag)

1 Image

Overview

Quantity:	10 µg
Target:	HKDC1
Protein Characteristics:	AA 102-200
Origin:	Human
Source:	Wheat germ
Protein Type:	Recombinant
Purification tag / Conjugate:	This HKDC1 protein is labelled with GST tag.
Application:	ELISA, Western Blotting (WB), Affinity Purification (AP), Antibody Array (AA)

Product Details

Purpose:	HKDC1 (Human) Recombinant Protein (Q01)
Sequence:	KRHVQMESQF YPTPNEIIRG NGIELFEYVA DCLADFMKTK DLKHKKLPLG LTFSFPCRQT KLEEGVLLSW TKKFKARGVQ DTDVVSRLTK AMRRHKDMD
Characteristics:	Human HKDC1 partial ORF (NP_079406, 102 a.a. - 200 a.a.) recombinant protein with GST-tag at N-terminal.
Purification:	in vitro wheat germ expression system

Target Details

Target:	HKDC1
Alternative Name:	HKDC1 (HKDC1 Products)

Target Details

Background:	Gene: hexokinase domain containing 1 Synonyms: FLJ22761, FLJ37767, MGC125688
Gene ID:	80201
NCBI Accession:	NM_025130

Application Details

Application Notes:	Optimal working dilution should be determined by the investigator.
Restrictions:	For Research Use only

Handling

Buffer:	50 mM Tris-HCl, 10 mM reduced Glutathione, pH =8.0 in the elution buffer.
Handling Advice:	Aliquot to avoid repeated freezing and thawing.
Storage:	-80 °C
Storage Comment:	Best use within three months from the date of receipt of this protein.

Images

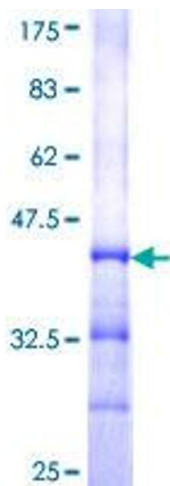


Image 1.