

Datasheet for ABIN1306743

HLA-DMA Protein (AA 1-261) (GST tag)[Go to Product page](#)**1** Image

Overview

Quantity:	10 µg
Target:	HLA-DMA
Protein Characteristics:	AA 1-261
Origin:	Human
Source:	Wheat germ
Protein Type:	Recombinant
Purification tag / Conjugate:	This HLA-DMA protein is labelled with GST tag.
Application:	ELISA, Western Blotting (WB), Affinity Purification (AP), Antibody Array (AA)

Product Details

Purpose:	HLA-DMA (Human) Recombinant Protein (P01)
Sequence:	MGHEQNQGAA LLQMLPLLWL LPHSWAVPEA PTPMWPDDLQ NHTFLHTVYC QDGSPSVGLS EAYDEDQLFF FDFSQNTRVP RLPEFADWAQ EQGDAPAILF DKEFCEWMIQ QIGPKLDGKI PVSRRGFPIAE VFTLKPLEFG KPNTLVCFVS NLFPPMLTVN WQHHSVPVEG FGPTFVSAVD GLSFQAFSYL NFTPEPSDIF SCIVTHEIDR YTAIAYWVPR NALPSDLLEN VLCGVAFGLG VLGIIVGIVL IYFRKPCSG D
Characteristics:	Human HLA-DMA full-length ORF (AAH11447, 1 a.a. - 261 a.a.) recombinant protein with GST-tag at N-terminal.
Purification:	in vitro wheat germ expression system

Target Details

Target:	HLA-DMA
Alternative Name:	HLA-DMA (HLA-DMA Products)
Background:	Full Gene Name: major histocompatibility complex, class II, DM alpha Synonyms: D6S222E,DMA,HLADM,RING6
Gene ID:	3108
Pathways:	Cancer Immune Checkpoints , Human Leukocyte Antigen (HLA) in Adaptive Immune Response

Application Details

Application Notes:	Optimal working dilution should be determined by the investigator.
Comment:	Preparation method: in vitro, wheat germ expression system Product Quality tested by: 12.5% SDS-PAGE Stained with Coomassie Blue.
Restrictions:	For Research Use only

Handling

Buffer:	50 mM Tris-HCl, 10 mM reduced Glutathione, pH =8.0 in the elution buffer.
Handling Advice:	Aliquot to avoid repeated freezing and thawing.
Storage:	-80 °C
Storage Comment:	Best use within three months from the date of receipt of this protein.

Images

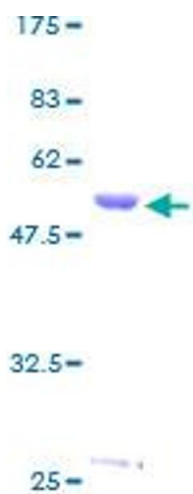


Image 1.