



[Go to Product page](#)

Datasheet for ABIN1306777

HLX Protein (AA 1-488) (GST tag)

1 Image

Overview

Quantity:	25 µg
Target:	HLX
Protein Characteristics:	AA 1-488
Origin:	Human
Source:	Wheat germ
Protein Type:	Recombinant
Purification tag / Conjugate:	This HLX protein is labelled with GST tag.
Application:	ELISA, Western Blotting (WB), Affinity Purification (AP), Antibody Array (AA)

Product Details

Purpose:	HLX1 (Human) Recombinant Protein (P01)
Sequence:	MFAAGLAPFY ASNFSLWSAA YCSSAGPGGC SFPLDPAAVK KPSFCIADIL HAGVGD LGAA PEGLAGASAA ALTAHLGSVH PHASFQAAAR SPLRPTPVVA PSEVPAGFPQ RLSPLSAAYH HHHPQQQQQQ QQPQQQPPPP PPRAGALQPP ASGTRVVPNP HHS GSAPAPS SKDLKFGIDR ILSAEFDPKV KEGNTRLRDLT SLLTGGRPAG VHLSGLQPSA GQFFASLDPI NEASAILSPL NSNPRNSVQH QFQDTFPGPY AVLTKDTMPQ TYKRKRWSR AVFSNLQRKG LEKRFEIQKY VTKPDRKQLA AMLGLTDAQV KVWFQNRMMK WRHSKEAQAQ KDKDKEAGEK PSGGAPAADG EQDERSPSRS EGAESESSD SESLDMAPSD TERTEGERS LHQTTVIKAP VTGALITASS AGSGGSSGGG GNSFSFSSAS SLSSSSTSAG CASSLGGGGA SELLPATQPT ASSAPKSPEP AQQALGCL
Characteristics:	Human HLX1 full-length ORF (NP_068777.1, 1 a.a. - 488 a.a.) recombinant protein with GST-tag at N-terminal.

Product Details

Purification: in vitro wheat germ expression system

Target Details

Target: HLX

Alternative Name: HLX ([HLX Products](#))

Background: Full Gene Name: H2.0-like homeobox
Synonyms: HB24,HLX1

Gene ID: 3142

NCBI Accession: [NM_021958](#)

Pathways: [Positive Regulation of Immune Effector Process](#)

Application Details

Application Notes: Optimal working dilution should be determined by the investigator.

Comment: Preparation method: in vitro, wheat germ expression system
Product Quality tested by: 12.5% SDS-PAGE Stained with Coomassie Blue.

Restrictions: For Research Use only

Handling

Buffer: 50 mM Tris-HCl, 10 mM reduced Glutathione, pH =8.0 in the elution buffer.

Handling Advice: Aliquot to avoid repeated freezing and thawing.

Storage: -80 °C

Storage Comment: Best use within three months from the date of receipt of this protein.

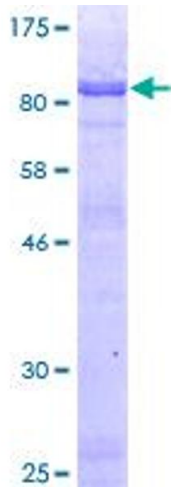


Image 1.