



[Go to Product page](#)

Datasheet for ABIN1306789

## HMG20B Protein (AA 1-317) (GST tag)

### 1 Image

#### Overview

Quantity:	25 µg
Target:	HMG20B
Protein Characteristics:	AA 1-317
Origin:	Human
Source:	Wheat germ
Protein Type:	Recombinant
Purification tag / Conjugate:	This HMG20B protein is labelled with GST tag.
Application:	Western Blotting (WB), ELISA, Affinity Purification (AP), Antibody Array (AA)

#### Product Details

Purpose:	HMG20B (Human) Recombinant Protein (P01)
Sequence:	MSHGPKQPGA AAAPAGGKAP GQHGGFVVTV KQERGEGPRA GEKGSHEEEP VKKRGWPKGK KRKKILPNGP KAPVTGYVRF LNERREQIRT RHPDLPFPEI TKMLGAEWSK LQPTKQRYL DEAEREKQQY MKELRAYQQS EAYKMCTEKI QEKKIKKEDS SSGLMNTLLN GHKGGDCDGF STFDVPIFTE EFLDQNKARE AELRRLRKMN VAFEEQNAVL QRHTQSMSSA RERLEQELAL EERRTLALQQ QLQAVRQALT ASFASLPVPG TGETPTLGTL DFYMARLHGA IERDPAQHEK LIVRIKEILA QVASEHL
Characteristics:	Human HMG20B full-length ORF ( NP_006330.2, 1 a.a. - 317 a.a.) recombinant protein with GST-tag at N-terminal.
Purification:	in vitro wheat germ expression system

## Target Details

Target:	HMG20B
Alternative Name:	HMG20B ( <a href="#">HMG20B Products</a> )
Background:	Full Gene Name: high-mobility group 20B Synonyms: BRAF25,BRAF35,FLJ26127,HMGX2,HMGXB2,PP7706,SMARCE1r,SOXL,pp8857
Gene ID:	10362
NCBI Accession:	<a href="#">NM_006339</a>

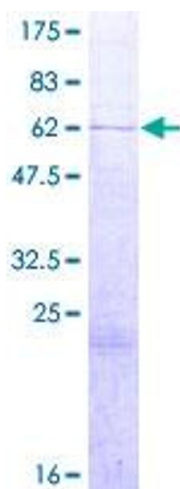
## Application Details

Application Notes:	Optimal working dilution should be determined by the investigator.
Comment:	Preparation method: in vitro, wheat germ expression system Product Quality tested by: 12.5% SDS-PAGE Stained with Coomassie Blue.
Restrictions:	For Research Use only

## Handling

Buffer:	50 mM Tris-HCl, 10 mM reduced Glutathione, pH =8.0 in the elution buffer.
Handling Advice:	Aliquot to avoid repeated freezing and thawing.
Storage:	-80 °C
Storage Comment:	Best use within three months from the date of receipt of this protein.

## Images



**Image 1.**