



[Go to Product page](#)

Datasheet for ABIN1306792

HMGA1 Protein (AA 1-96) (GST tag)

1 Image

1 Publication

Overview

Quantity:	25 µg
Target:	HMGA1
Protein Characteristics:	AA 1-96
Origin:	Human
Source:	Wheat germ
Protein Type:	Recombinant
Purification tag / Conjugate:	This HMGA1 protein is labelled with GST tag.
Application:	Western Blotting (WB), ELISA, Affinity Purification (AP), Antibody Array (AA)

Product Details

Purpose:	HMGA1 (Human) Recombinant Protein (P01)
Sequence:	MSESSSKSSQ PLASKQEKDG TEKRGRGRPR KQPPKEPSEV PTPKRPRGRP KGSKNKGAAK TRKTTTTTPGR KPRGRPKKLE KEEEEGISQE SSEEEQ
Characteristics:	Human HMGA1 full-length ORF (AAH04924.1, 1 a.a. - 96 a.a.) recombinant protein with GST-tag at N-terminal.
Purification:	in vitro wheat germ expression system

Target Details

Target:	HMGA1
Alternative Name:	HMGA1 (HMGA1 Products)

Target Details

Background:	Full Gene Name: high mobility group AT-hook 1 Synonyms: HMG-R,HMGA1A,HMGIY,MGC12816,MGC4242,MGC4854
Gene ID:	3159
Pathways:	Nuclear Hormone Receptor Binding, Autophagy

Application Details

Application Notes:	Optimal working dilution should be determined by the investigator.
Comment:	Preparation method: in vitro, wheat germ expression system Product Quality tested by: 12.5% SDS-PAGE Stained with Coomassie Blue.
Restrictions:	For Research Use only

Handling

Buffer:	50 mM Tris-HCl, 10 mM reduced Glutathione, pH =8.0 in the elution buffer.
Handling Advice:	Aliquot to avoid repeated freezing and thawing.
Storage:	-80 °C
Storage Comment:	Best use within three months from the date of receipt of this protein.

Publications

Product cited in:	Lau, Chan, Pang, Ma, Li, Yeung, Cheng, Feng, Chung, Li, Zhou, Wang, Mao, Ng: "Overexpression of HMGA1 deregulates tumor growth via cdc25A and alters migration/invasion through a cdc25A-independent pathway in medulloblastoma." in: Acta neuropathologica , Vol. 123, Issue 4 , pp. 553-71, (2012) (PubMed).
-------------------	---

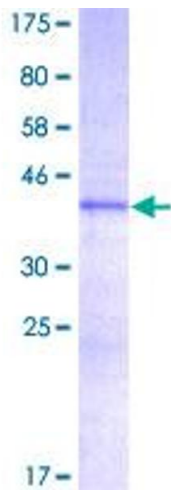


Image 1.